

SOCIETY

A MAGNA PUBLICATION
www.magnapublication.com

SOCIETY

SOCIETY

INTERIORS INTERIORS INTERIORS

7.25 January 2014



Superstars of
Design



CONTENTS



248



132



184

152 SEEMA PURI

A good blend of architecture, landscape and interior design has made Ar. Seema Puri one of the most respected architects in the country.

164 SANDEEP KHOSLA & AMARESH ANAND

Khosla Associates creates breathtaking designs by using contemporary design sensibilities in local context.

176 SONALI RASTOGI

Morphogenesis, the award-winning firm of Ar. Sonali Rastogi, is dedicated towards creating landmark structures that contribute to environment-friendly and sustainable architecture.

184 REZA KABUL

The various remarkable projects designed by Ar. Reza Kabul are a result of his hard work and dedication.

200 SUMANA AND DINESH

The projects designed by Sumana Dinesh Associates have a proper blend of technology and use of new materials.

212 LAKSHMI CHAND SINGH & RAHUL B SINGH

Lakshmi Chand Singh & Rahul B Singh's design studio RLDA blends both traditional and digital construction techniques to design awe-inspiring spaces.

220 KRITHIKA SUBRAMANIAN

The designs of architect and designer Krithika Subramanian artistically merge both traditional and modern styles, thus lending a unique design language to her works.

230 SUNIL PATIL

Kolhapur-based Sunil Patil and Associates strives to create sustainable designs that are one with nature.

240 JAYASHREE AND KAPIL BHALLA

The structures created by Jayashree and Kapil Bhalla of Se-arch completely reverberate with the local environment.

248 MANISH GULATI

Manish Gulati of M.OFA Studios Pvt. Ltd. considers architecture to be a fluid expression and designs each of his projects with a holistic approach.

256 AMIT KHANNA

According to Ar. Amit Khanna of AKDA, architecture is reductive simplicity rooted in material, design and craftsmanship, and his works do complete justice to his belief.

264 VINOD & SHALINI BACHALA

Ar. Vinod & Shalini Bachala of Design Square showcase their passion for design through their diverse hospitality and residential projects.

272 ABIN CHAUDHURI

Ar. Abin Chaudhuri of Abin Design Studio shares his design approach in varied fields and speaks about the design challenges faced by the firm.

278 DEVIKA BANERJEE

Kolkata-based Devika Banerjee of Designers Guild creates sleek, understated interiors by using locally available resources.

286 AAMIR & HAMEEDA SHARMA

Aamir and Hameeda Interior Designers and Contractors rightly identify with the client's tastes and preferences to create functional and unique spaces.

REGULAR BEAT
in Thing
Talking Shop
Property Watch
Green News
International News
Know Your Architect



REVOLUTIONARY DESIGNS

Manish Gulati, Principal Architect and Director of **M:OFA Studios Pvt. Ltd.**, deems architecture to be fluid expression, throbbing with the vibrations of life.

In fact, M:OFA stands for Manifestation of Fluid Architecture. With a career spanning 14 years, Manish feels architectural realms are defined beyond the rules of regularized grids, dimensions and principles, which help in giving each project in the field of architecture, interiors and urban design a holistic approach.



O

ver the years, Ar. Manish Gulati has worked on a number of projects across different segments such as institutions, recreational facilities and sports infrastructure. While speaking to *Society Interiors*, Manish talks about his diverse portfolio.

What attracted you towards architecture?

As architecture is permanent and withstands eras and change, we see all these facets while drawing context, conceptualizing it and presenting the final product. In the beginning I had a hazy idea as to why I was inclined towards architecture, but its many layers makes it a canvas big enough to absorb, process and combine my multiple interests, sustain it and inspire me further. What made me enter must have been a germ of an idea, but its enriching complexity, both intellectually and creatively, has made me stay.

What is the USP of your portfolio?

There is no stylization that makes our projects distinctive; each project is true to its context and not to the architects.

The works of which architects has been instrumental in shaping your career?

It has to be Le Corbusier, Frank Lloyd Wright, Louis Kahn and my alma mater at CEPT Ahmedabad. I was taught by some exceptionally talented architects who imparted valuable lessons on the subject; one being architecture is a way of life.



AMAN BINA RESIDENCE, NOIDA

Which has been your favourite project and why?

Notre Dame du Haut, Ronchamp, by Le Corbusier is my favourite piece of architecture. Having said this, I feel all projects have a tale to tell and, hence, are dear to me.

What type of spaces challenge you the most and why?

We do contextual spaces and our response to architecture is adaptive. So, non contextual spaces or an absence of a context with no reference are challenging as here the clues are derived out of everything else. However, this does bring out some exceedingly creative spaces.

What is your philosophy in life?

We are given each new day to do something meaningful with it. So utilize this precious chance and do your best in whichever field and whichever capacity.

What are your future plans?

Designing and more designing! We have an insatiable appetite for design and we look forward at doing more projects that support bold and smart ideas. Eventually, the goal is to make a difference to the quality of life of an individual or the society as a whole.



THE GOLDEN TUSK RESORT, UTTARAKHAND



From the wide variety of projects designed by Manish Gulati's firm, let's glance through some of his architectural marvels.

AMAN BINA RESIDENCE, NOIDA

The Aman Bina residence is designed in way that makes it appear as if the walls are floating over the floors. They also twist, turn and reshape to suit the functional requirements of the inhabitants. Hence, the design rises up from mundane to present itself as a more musical composition, floating in space where the fluid forms transform the regular architectural elements. This resulted in the home being a seamless art installation in itself.

The home was acquired as a bare structure from the developer and layers were added to each area of the home, starting from the services to the sinks and surfaces. The vertical surfaces are constructed using the dry wall construction. The fluid walls, ceilings and furniture pieces such as the melting dining table and children's beds are all created using layered plywood, sheathed under a layer of Ferro cement.

The terrace, on the other hand, was conceived to be a space that becomes one with nature, integrating a relationship between the earth and the sky. The peripheral edge gardens, a reclaimed wood deck built around the swimming pool and the intimate natural teakwood pavilions give the space a much-needed green relief. The walls of the home bend, column grids twist and the floors rise up and fall responding to ever-changing energy fields.

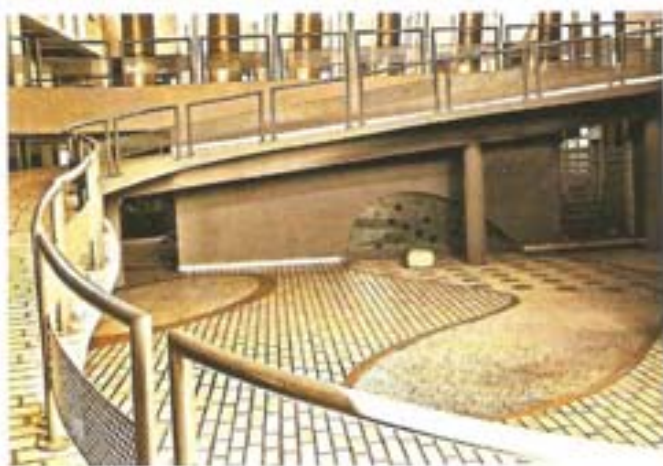


THE GOLDEN TUSK RESORT, UTTARAKHAND

The design philosophy followed in The Golden Tusk Resort is to give first hand experience of countryside living to urban travellers and hence, sensitize them to the idea of the effective utilization of resources. The cottages are made of local materials used in a contemporary design and the resort reunites cosmos and nature with mankind.

Right from the reception, exhibition gallery meant for nature photographers, residential accommodations of various kinds (forest view suites, villas, luxury tents), a gourmet restaurant (that serves food using fresh organic ingredients), swimming pool, recreational areas and spa, a water rivulet runs through the length of the site with multiple sit-out spaces and porches. The villas and suites all have buffer spaces in the form of porches. Throughout the resort, the use of local stone masonry, reclaimed wood carpentry and metal works are all reflections of the local craftsmanship and materials of the surrounding regions.





ITM SCHOOL OF BUSINESS, GWALIOR

The building of ITM School of Business sits like a solid stone block with a lightweight industrial roof hovering over it supported by thin surrealist legs. The roof provides a sense of relief to the inhabitants and also makes it an inherently green building. The open parasol roof over a hollowed out space allows hot air to escape and natural winds to flow in. Further, the plants on the first level retain moisture, thus moderating the temperatures at the ground level and keeping the air refreshed.

The free-flowing interiors of the building help to unleash fluidity of thought, imagination and ideas. The ground level is built on the principles of the traditional Indian courtyard and provides students with a large open space in the centre for introspection. The clean grey walls, the water body and modern landscape blobs on the floor reflect the entrepreneurial spirit of the students.

The building uses traditional *jaali* works which acts as screens and a vertical extension of the building's open courtyards. These white Dholpur sandstone screens are not just an aesthetic treat that cast interesting shadows with light, but also an architectural necessity for spaces with high temperatures.

On the whole, M:OFA Studios Pvt. Ltd. works present us architectural masterpieces.

CONTACT DETAILS

M:OFA STUDIOS PVT. LTD.

16/12, Lower Ground

Kalkaji

New Delhi 110019

☎ 011 40513867

✉ contact@mofastudio.com

🌐 www.mofastudio.com



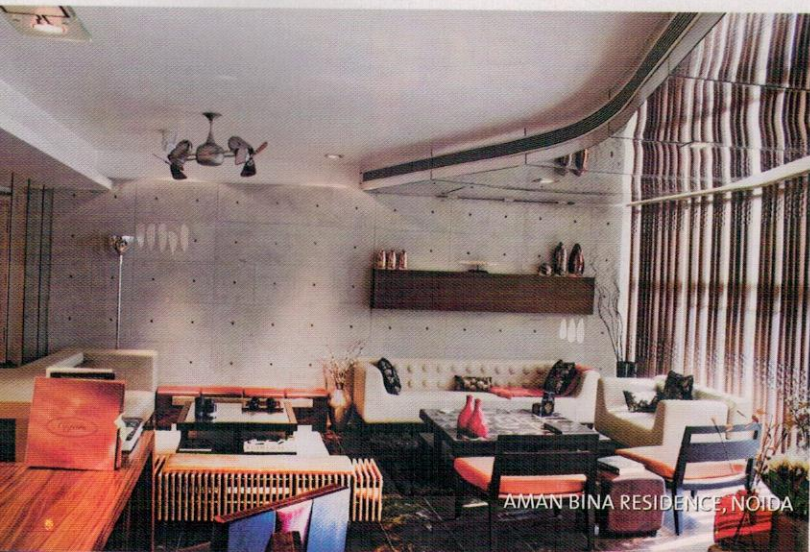
REVOLUTIONARY DESIGNS

Manish Gulati, Principal Architect and Director of **M:OFA Studios Pvt. Ltd.**, deems architecture to be fluid expression, throbbing with the vibrations of life.

In fact, M:OFA stands for Manifestation of Fluid Architecture. With a career spanning 14 years, Manish feels architectural realms are defined beyond the rules of regularized grids, dimensions and principles, which help in giving each project in the field of architecture, interiors and urban design a holistic approach.



THE GOLDEN TUSK RESORT, UTTARAKHAND



AMAN BINA RESIDENCE, NOIDA



TM SCHOOL OF BUSINESS, GWALIOR



ver the years, Ar. Manish Gulati has worked on a number of projects across different segments such as institutions, recreational facilities and sports infrastructure. While speaking to *Society Interiors*, Manish talks about his diverse portfolio.

What attracted you towards architecture?

As architecture is permanent and withstands eras and change, we see all these facets while drawing context, conceptualizing it and presenting the final product. In the beginning I had a hazy idea as to why I was inclined towards architecture, but its many layers makes it a canvas big enough to absorb, process and combine my multiple interests, sustain it and inspire me further. What made me enter must have been a germ of an idea, but its enriching complexity, both intellectually and creatively, has made me stay.

What is the USP of your portfolio?

There is no stylization that makes our projects distinctive; each project is true to its context and not to the architects.

The works of which architects has been instrumental in shaping your career?

It has to be Le Corbusier, Frank Lloyd Wright, Louis Kahn and my alma mater at CEPT Ahmedabad. I was taught by some exceptionally talented architects who imparted valuable lessons on the subject; one being architecture is a way of life.



AMAN BINA RESIDENCE, NOIDA

Which has been your favourite project and why?

Notre Dame du Haut, Ronchamp, by Le Corbusier is my favourite piece of architecture. Having said this, I feel all projects have a tale to tell and, hence, are dear to me.

What type of spaces challenge you the most and why?

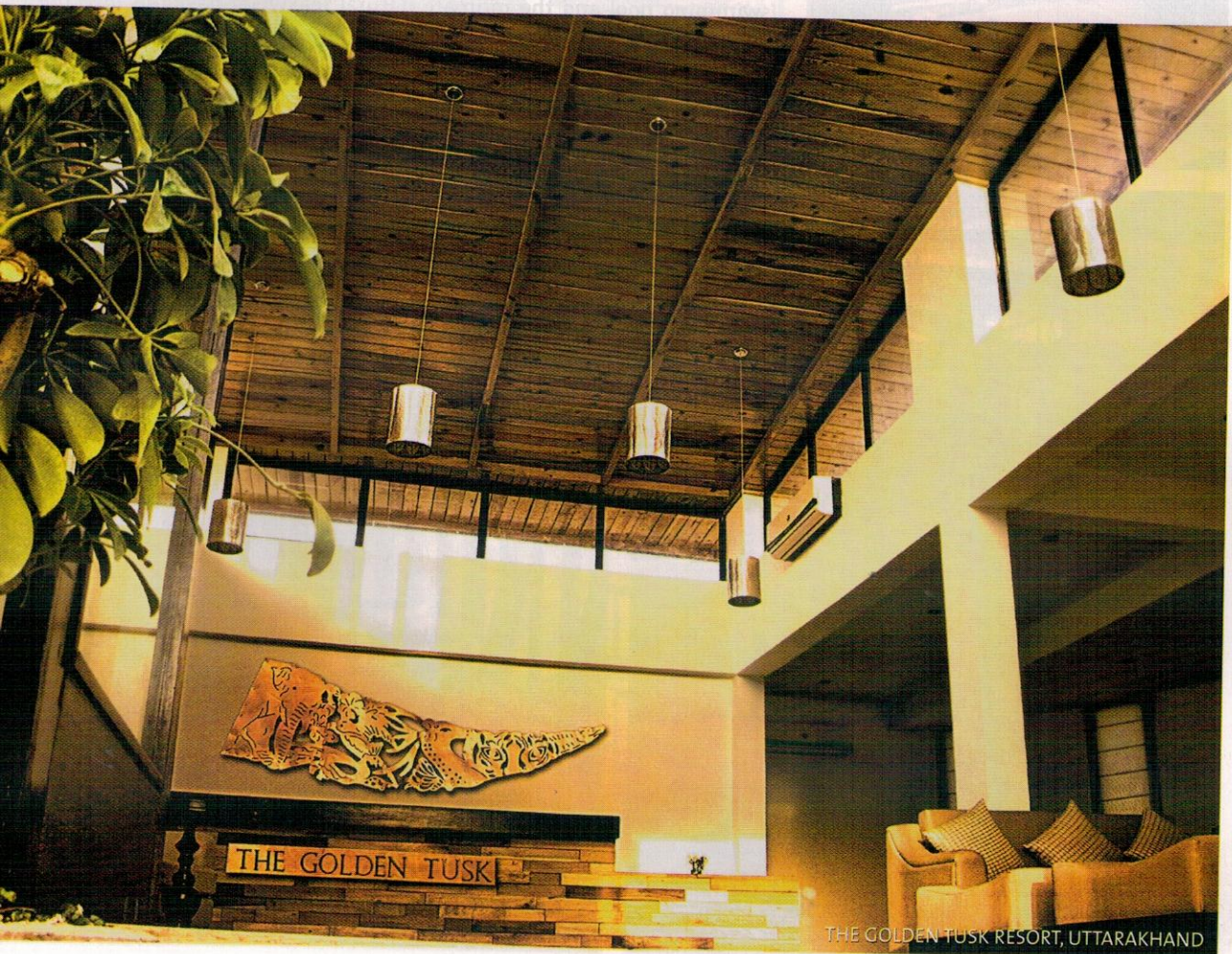
We do contextual spaces and our response to architecture is adaptive. So, non contextual spaces or an absence of a context with no reference are challenging as here the clues are derived out of everything else. However, this does bring out some exceedingly creative spaces.

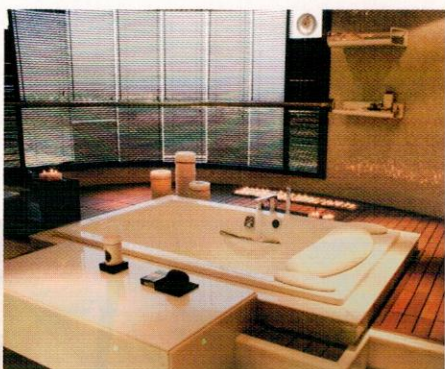
What is your philosophy in life?

We are given each new day to do something meaningful with it. So utilize this precious chance and do your best in whichever field and whichever capacity.

What are your future plans?

Designing and more designing! We have an insatiable appetite for design and we look forward at doing more projects that support bold and smart ideas. Eventually, the goal is to make a difference to the quality of life of an individual or the society as a whole.





From the wide variety of projects designed by Manish Gulati's firm, let's glance through some of his architectural marvels.

AMAN BINA RESIDENCE, NOIDA

The Aman Bina residence is designed in way that makes it appear as if the walls are floating over the floors. They also twist, turn and reshape to suit the functional requirements of the inhabitants. Hence, the design rises up from mundane to present itself as a more musical composition, floating in space where the fluid forms transform the regular architectural elements. This resulted in the home being a seamless art installation in itself.

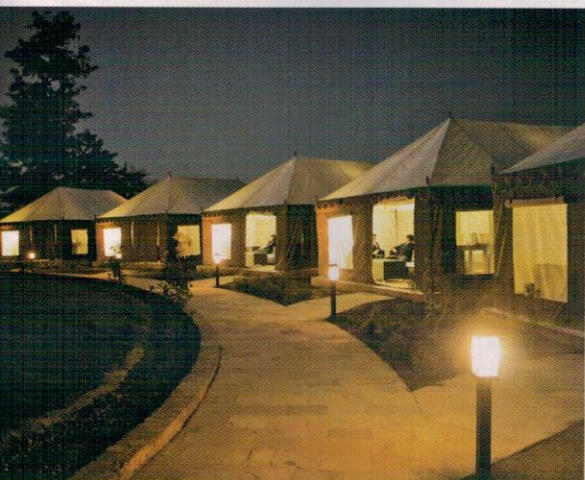
The home was acquired as a bare structure from the developer and layers were added to each area of the home, starting from the services to the sinks and surfaces. The vertical surfaces are constructed using the dry wall construction. The fluid walls, ceilings and furniture pieces such as the melting dining table and children's beds are all created using layered plywood, sheathed under a layer of Ferro cement.

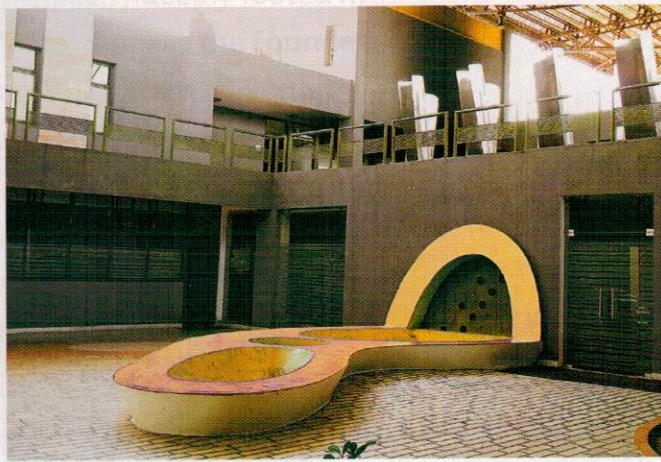
The terrace, on the other hand, was conceived to be a space that becomes one with nature, integrating a relationship between the earth and the sky. The peripheral edge gardens, a reclaimed wood deck built around the swimming pool and the intimate natural teakwood pavilions give the space a much-needed green relief. The walls of the home bend, column grids twist and the floors rise up and fall responding to ever-changing energy fields.

THE GOLDEN TUSK RESORT, UTTARAKHAND

The design philosophy followed in The Golden Tusk Resort is to give first hand experience of countryside living to urban travellers and hence, sensitize them to the idea of the effective utilization of resources. The cottages are made of local materials used in a contemporary design and the resort reunites cosmos and nature with mankind.

Right from the reception, exhibition gallery meant for nature photographers, residential accommodations of various kinds (forest view suites, villas, luxury tents), a gourmet restaurant (that serves food using fresh organic ingredients), swimming pool, recreational areas and spa, a water rivulet runs through the length of the site with multiple sit-out spaces and porches. The villas and suites all have buffer spaces in the form of porches. Throughout the resort, the use of local stone masonry, reclaimed wood carpentry and metal works are all reflections of the local craftsmanship and materials of the surrounding regions.





ITM SCHOOL OF BUSINESS, GWALIOR

The building of ITM School of Business sits like a solid stone block with a lightweight industrial roof hovering over it supported by thin surrealistic legs. The roof provides a sense of relief to the inhabitants and also makes it an inherently green building. The open parasol roof over a hollowed out space allows hot air to escape and natural winds to flow in. Further, the plants on the first level retain moisture, thus moderating the temperatures at the ground level and keeping the air refreshed.

The free-flowing interiors of the building help to unleash fluidity of thought, imagination and ideas. The ground level is built on the principles of the traditional Indian courtyard and provides students with a large open space in the centre for introspection. The clean grey walls, the water body and modern landscape blobs on the floor reflect the entrepreneurial spirit of the students.

The building uses traditional *jaali* works which acts as screens and a vertical extension of the building's open courtyards. These white Dholpur sandstone screens are not just an aesthetic treat that cast interesting shadows with light, but also an architectural necessity for spaces with high temperatures.

On the whole, M:OFA Studios Pvt. Ltd. works present us architectural masterpieces.

CONTACT DETAILS
M:OFA STUDIOS PVT. LTD.
16/12, Lower Ground
Kalkaji
New Delhi 110019
☎ 011 40513867
✉ contact@mofastudio.com
🌐 www.mofastudio.com

Text: Trisha Mahajan Photographs: M:OFA Studios Pvt. Ltd.