

# HOME & DESIGN

Volume 4 No 4

₹250

A Times of India publication

# TRENDS



INDIA'S  
**TOP 10  
HOMES  
2016**  
+  
BEST OF INDIAN  
COMMERCIAL  
SPACES 2016



R.N.I. MAHENG/2013/50949



MW88160901

# Interconnected spaces by **M:OFA Studios**

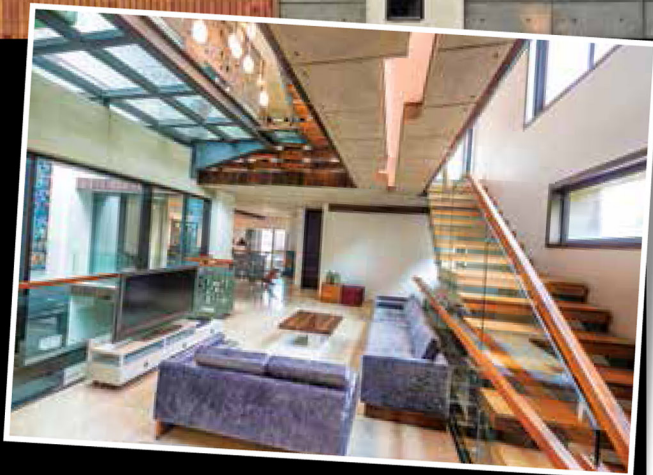
Location: New Delhi  
Area: 11,500 sqft



“To facilitate interconnectivity, we broke away from the conventional norm of dividing the house into floors and connected them vertically.”

— Manish Gulati





House B123 in New Delhi reinterprets Indian traditional architecture in a contemporary tone to suit the lifestyle of its residents. Delhi-based M:OFA Studios, headed by principal architects Manish and Tanushree Gulati, gave this 11,500 sqft residence an interconnected design that echoes the open relationship between the three families that reside in the house.

“We had to design a home for a tightly-knit joint family, which needed open avenues for interaction. The plot was only 300 square yards, so we demolished the original building and came up with a complex arrangement with a mix of public and private spaces,” explains Manish.

Due to the compactness of the plot, horizontal expansion was limited. To combat this, Gulati had to elongate the house vertically and design it as a boxed structure on the outside, with multiple levels inside. Spread across five levels, this residence accommodates a formal living space, a family lounge, a TV lounge, a party hall and eight bedrooms, besides the kitchen and multiple bathrooms. The backbone of the house is a central atrium, complete with a floating lounge, plunge pool, feature wall and an AC and lighting duct.

“To facilitate interconnectivity, we broke away from the conventional norm of dividing the house into floors and connected them vertically. There are lots of cross views inside, which is great for family interactions. We also restructured the circulation so that the staircases pass through the public spaces,” says Gulati.

