

# Architecture

ARCHITECTURE | INTERIORS | LANDSCAPE

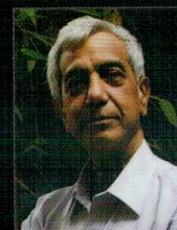
UPDATE AU

## Projects:

The Digit, Anagram Architects  
Office for Delhi Daredevils, M:OFA  
C- 221, Design Consortium



## On Greener Architecture:



Prof. K. Jaisim  
Jaisim Fountainhead



Ar. Dikshu C. Kukreja  
CP Kukreja Architects



Ar. Manit Rastogi  
Morphogenesis

# Materials Matter



Materials  
recycled wood planks



The new flamboyant **Office Space for Delhi Daredevils**, one of the Indian Premium Cricket league (IPL) teams, designed by **M:OFA** at **Delhi**, reflects not just the brand identity of the team, but also incessant flow of energy. The idea was to blur the lines between 'work-play-mee't spaces in order to get the sporting energy vibe throughout the office. The Think Tank Lounge which occupies the central place in the office showcases intricate designs in wood planks resembling a swirl of energy.

*Text & photographs: courtesy, the architect*

# A Swirl of

**Delhi Daredevils, Cricket IPL Head-office, New Delhi, India**  
Manifestation of Fluid Architecture [M:OFA]



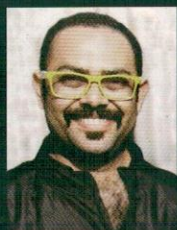




# Energy

The Head office for Delhi Daredevils, an IPL cricket team, located in New Delhi, designed by M.OFA, is an exemplary model of fluidity. The designers fused the old model with refashioned logo of the team to create an intrinsic fluidity in architecture of the place. The GMR group which bought the team desired a complete image makeover of the team, from replacing the old players with new, even changing their logo. They wanted the office space to be designed to explore tremendous scope for work and leisure, at the same time symbolizing the young brand with sports energetic vibe

In keeping with the new brand image, the designers planned an office space as a youth oriented semi formal open plan with multiple overlaps



**Manish Gulati**, the Principal Architect and Director M.OFA Studios has over 14 years of work experience working on multiple verticals right from institutional, sports infrastructure, hospitality, residential, retail and commercial. Architect Manish is an alumnus of School of Architecture, CEPT Ahmadabad. He started his practise in 2002 in New Delhi. His innate ability to remain abreast with technology, his deep love for the arts and sensitivity towards life always remains at core to any of his works. His forte and driving passion is design and innovation. His design process is supported by his global and holistic approach towards architecture in terms of constant research, resolution, analysis, reports, case studies & project discussions on design, functionality, technology, inventive concepts and sustainability issues. This innovative approach has lead M.OFA to create many national and international award winning projects and to generate a niche for itself in a short span of time.







*the reception desk designed in white Corian, with display boxes of various sizes in the backdrop, and the Think Tank Lounge in the forefront*

between working and meeting areas. The idea was to blur the lines between work-play-meet areas, to allow the sporting energy vibe to flow uninterrupted throughout the office. Apart from a formal conference room meant for sponsor meetings, two more meeting areas were introduced. One near the reception as an informal discussion/ ideation space that could be reorganized in multiple configurations and the other space called "the think tank lounge" as an ideal 'work-play-meet' space.

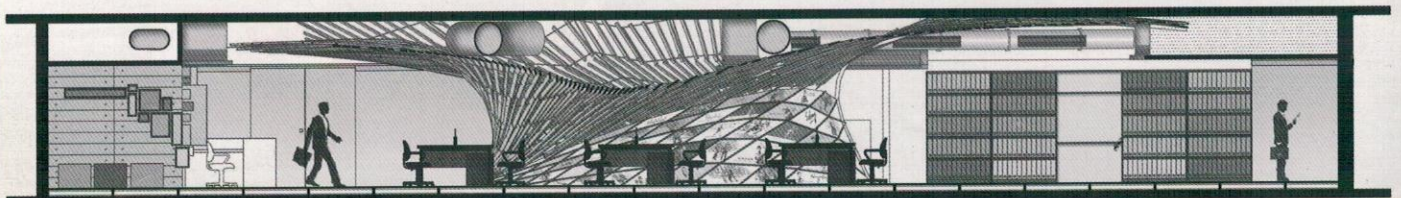
The reception desk is designed in white Corian with display boxes of various sizes in the backdrop that bears the team memorabilia, autographed bats, hand-prints by the players over last six years, LED screens, permanent display of player profiles over the cloud installation, etc - all are used to associate the new with the old, creating high fervour and madness with which cricket is associated in India.

The Think Tank Lounge, the focal-point of the office, is designed as a swirl of energy. Multiple movie frames of batsmen hitting various strokes to bowlers swing arms were analysed and carefully overlapped with various shots to derive the splines that led to model a swirl cloud which is a true representation of various cricket balls hit by multiple batting strokes in all directions across the stadium. This NURBS (Non Uniform Rational B-Splines) model was further resolved to be constructed economically, using slender steel cage covered by modules

of four inch by three feet of wooden planks recycled from waste shipping pallets which is approximately close to a size of a cricket bat. The lower part of this installation was divided into trapezoidal panels, each representing a player over the six years of Delhi Daredevils, UV printed over MDF boards. The installation of this master-piece, offers multiple experiences from various angles both from outside and inside of this shape. From outside it emulates the energy of batting strokes, whereas from inside, it resonates the collective force of thousands of spectators cheering during the match.

The work-stations and cabins are conceptualized in collaboration with steel-case. The workspaces are designed to encourage flexible collaborative working while keeping the identity of an individual desk intact. The opaque divider panels between the workstations are replaced with low dynamic red acrylic panels to spur the team spirit among the co-workers. Usage of similar desks with clear glass partitions for the executive cabins reduces the hierarchy and induces free flow of ideas and strategies. This has resulted into strong team bonding between top-management and the lower level-management.

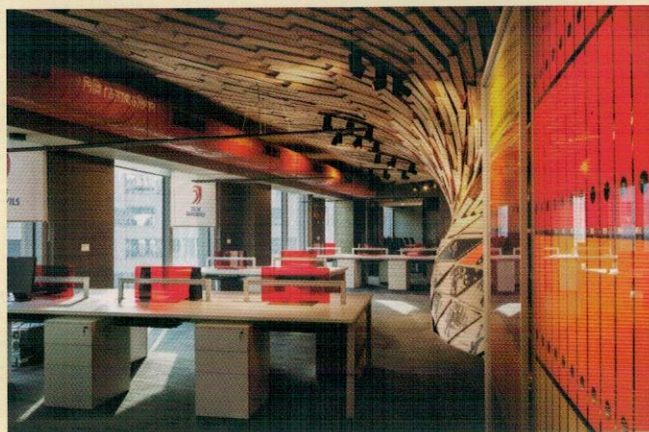
The whole aura of the office has been kept sporty with the controlled use of corporate reds and ambers over the neutral grey palette created by the cement board panelling in the entire office space. The interplay of bright colours with neutral greys has further been juxtaposed with







the management rooms



workstations and storage

the extensive use of recycled wood planks and natural MDF panels which adds another layer to the experiential depth of the office. The light fixtures were custom designed by Luzlight design Studio, New Delhi. The task-lights over the workstations, designed as a group of three long and thin slivers of light represents the three wickets while the randomness of linear point-lights within the think tank lounge represents millions of flashbulbs in the stadium.

The air-conditioning ducts which runs openly throughout the office is illustrated with "Delhi Daredevils" spray-painted in 10 different Indian languages representing the multi-cultural profile of the team players. ▲

**fact file:**

project	: Head Office for Delhi Daredevils, IPL Cricket team
location	: New Delhi, NCR, India
client	: GMR Sports Pvt Ltd
architect	: Manish Gulati, Manifestation of Fluid Architecture [M:OFA]
design-team	: Abhishek Sorampuri, Sameeksha Gulati, Smriti Dhawan, Sonali Gupta
consultants	: M:OFA Studios Pvt. Ltd. and PMC by Jade Consultants
contractors	: Electrical, Civil & Interiors: Vishal Furnishers; Cloud Installation: Cutting Creations; HVAC: Ambience Airtech Pvt. Ltd.
material used	: Cement board panels, Recycled wood planks from shipping pallets, MDF UV printed or Duco coated, Corian, Carpet, custom designed lighting fixtures
commencement date	: December, 2013
completion date	: April, 2014
area	: site area - 298-sq m ( 3200-Sq ft); built-up area - 298-Sq m (3200-sq ft)

