



the indian review of  
world furniture,  
interiors and design

volume 11 . issue 05 . september





## M:OFA STUDIO

a comprehensive design practice which deals with architectural issues while going deep into the design, planning, graphics, technology and management perspectives

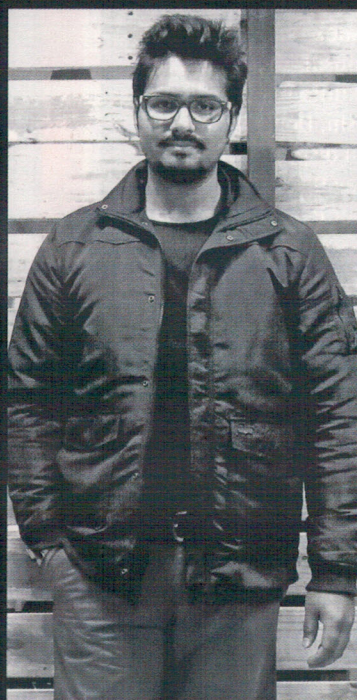
### Manifestation Of Fluid Architecture

or M:OFA, is described as a realization of a design theory where architecture is defined beyond the grid. Architect duo Manish & Tanushree Gulati treat architecture as a living organism that changes, adapts itself and responds to the changes around it. A practice that was first set up in 2002, Ar. Manish Gulati says it was the formalization of this philosophy that led to Studio GSA (2002-2006) being reborn as M:OFA in 2007. Ar. Abhinav Chaudhary joined the studio in 2008.

An admirer of the works of Le Corbusier, Louis Kahn and Frank Lloyd Wright, Ar. Manish Gulati says, "They have an exhaustive body of work which shows evolution in their journey, their work never remained static, and it is this growth in their work that formed the basis of my understanding and love of architecture." At M:OFA, they say the biggest influence is life itself.

Over the years, the firm has grown from a boutique architectural design practice to an institution where architectural design has gone beyond passion. A conglomeration of innovative mindsets and effective systems, ready to scale at a global level and handle any scale project. Today, they have established a presence in several verticals, spanning institutional, sports, hospitality, residential and recreational projects. "We like to work with clients who understand and appreciate design. Design translates directly into built spaces which affect occupants and their psyches. Our work is an extension of the clients' own ideas and philosophies," says Ar. Manish.

M:OFA looks at creating a global collaboration and presence in the coming years. Their aim is to create an indigenous language, which is not defined by geography, but emerges out of a deep understanding of relationships and







## THE PENSIEVE INSTALLATION

**Location :** New Delhi

### **Concept :**

An experiential pavilion designed by M:OFA, the installation is based on the idea of the fluid thoughts generated in one's head as kids in the 80s – 90s. Inspired by the ruins that dot Delhi, the incomplete broken stone walls are perceived as contemplative spaces filled with countless drawers of memories. 1200 shipping pallets used and discarded in the transportation industry have been reused to create this installation.

### **Designer Speak :**

"The Pensieve is not just a problem solver and it's definitely not a pretty picture to adorn a magazine. It is indeed, a state of mind that syncs everything around itself with a fresh breath of life, an infinite pool of energy, full of life and a level where the human soul elevates from the mundane, just like looking at a Van Gogh, or immersing oneself into Beethoven. It acts as a reminder of the simpler times where children looked at the world beyond a digital display in their hands. Design is an idea or emotion, medium could be any. Design is life itself : the ability to reuse, converse and yet create innovation."







## NATIONAL INSTITUTE OF WATER SPORTS INSTITUTIONAL

**Location :** Goa

### **Concept :**

The National Institute of Water Sports (NIWS), spread over a 100,000 sq. ft. waterfront property was commissioned in 2010, by the Goa State Infrastructure Development Corporation Limited via an international competition. The design strikes a dynamic relationship between the building and the sea through its architectural language and spatial organization. Materials used include corten steel, local laterite stone, a sheet roof, aluminum anodized panels, granite, doug fir and reclaimed wood.

### **Designer Speak :**

"The form of the space is an articulation of the tension between a yet adventurous moment or a passage in time. Our design originated from the moment where a surfer jumps into a beckoning, powerful and beautiful sea, it becomes a continuous and passionate spar between the two elements. The building in this case is just a link between land and the sea. We delivered a design that evokes similar sentiments."







## DELHI DAREDEVILS HEAD OFFICE COMMERCIAL

**Location :** New Delhi

### **Concept :**

The 3,200 sq. ft. head office designed for the Indian Premier League, infuses in its design the energy, dynamism and passion of a cricket pitch and stadium. Keeping in mind both teamwork and individual identity, the office is planned as a semi-formal open plan with multiple overlaps between working and meeting areas. Apart from a formal conference room, an informal discussion space called the Think Tank Lounge, is a representation of various cricket balls hit by multiple batting strokes in all directions across a stadium. Constructed using cement board panels and recycled wood planks from shipping pallets, the look and feel of the space reflects the controlled use of reds, ambers and grays to maintain the sports motif.



### **Designer Speak :**

"The Think Tank Lounge, designed as a swirl of energy, is designed to give different experiences from various angles on the outside and inside of the shape. From outside it emulates the energy of batting strokes, whereas from the inside it resonates the collective force of thousands of spectators cheering during the match. This space became the spine of the office with individuals and teams working and strategizing together across the hierarchy." if