

Complimentary Copy
Not For Sale TOTAL 212 PAGES

SOCIETY

A MAGNA PUBLICATION
www.societyinteriors.co.in

INTERIORS

₹ 75 September 2014

YOGI CHAUBAL'S
SPANISH-BALINESE SPIN

KHOSLA ASSOCIATES'
CHIC HIGH ULTRA LOUNGE

+ JAMES LAW CYBERTECTURE INTERNATIONAL | SUYING METROPOLITAN STUDIO
MANISH GULATI | AMIT PORWAL | PIYUSH SOLANKI | SAGHARICA SAWHNEY

sporty STATION

DELHI DAREDEVILS' CORPORATE OFFICE DESIGNED BY AR. MANISH GULATI REFLECTS YOUTHFULNESS AND A SPARK OF ENERGY, ALL CAPTURED INSIDE THE SWIRL.

A passion for sports which neither grows old nor dies is the mantra of **Delhi Daredevils**—a cricket franchise representing the city of Delhi in Indian Premier League. This is nonetheless similar to the vibrant, colourful, dynamic and, above all, energetic spirit of Delhi, which is aesthetically incorporated in Delhi Daredevils' office.

Designed by Delhi-based **Ar. Manish Gulati** of **M:OFA Studios Pvt. Ltd.**, the 3,200 sq. ft. corporate office is located on the 4th floor of **Aria Towers** in **JW Marriott** hotel.

Speaking about the young and energetic brand, **Vinod Bisht**, Associate Vice President—Events, Delhi Daredevils, **GMR Sports Pvt. Ltd.**, says, "We wanted a space that is young and lively considering the team that we have and the city we represent. A lot of emphasis was laid on including elements that define the team like the merchandize, 3D stickers representing the team and city, sporty furniture, AC ducting with the brand name in several languages and the overall colourful space, which brings in an energetic vibe.

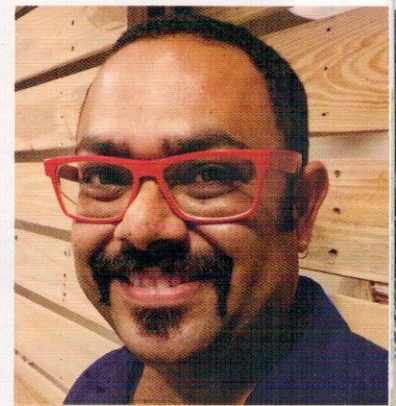


Analyzing energy is very important and for us it starts with the team forming, which further moves to everyone else. Plus, a swirl structure was created for the enthusiastic team, which is merely a representation of the cyclone having energy at its centre."

Explaining the challenges, Manish says, "Designing something novel as well as unique in a given time frame and budget is always a challenge. In addition, being a commercial space, it was imperative to control the timelines; the office had to be ready for the new team and the season. Through careful planning, newer systems were created, adapting the craziest ideas in the most organized manner."

Lending further insight into the design process, the architect explains, "This year, the team went for a complete makeover with a new logo formed by fluid curves representing a kite soaring high, and also could be related to the spirit of cricket in a jam-packed stadium when the batsman strikes the ball high across the boundary for a six. Keeping the new brand image in mind, the office is planned as a youth-oriented, semi-formal open office with multiple overlapping working and meeting areas. The idea was to blur the lines between work-play-meet and create sporty and energetic environs."

As one approaches the office area, one is greeted by 'Delhi Daredevils' being written in several languages on a glass wall. As one is ushered into the reception area, one notes a wall where the merchandize is displayed. Little ahead is the waiting lounge, which has autographed bats and hand prints on display. The adjoining wall of the waiting area defines the team in many ways with relevant phrases written on the wall. Next to the waiting area is the conference room with a 12-seater setup, offering an entire view of Feroz Shah Kotla Stadium on a digitally printed 3D sticker pasted on either sides of the glass door. Upon entering, small snippets of the matches played in last three years aesthetically highlight the team's performances.



Manish Gulati

M: OFA STUDIOS PVT LTD

16/12, Lower Ground

Kalkaji

New Delhi 110019

☎ 011 40513867, 26287786

✉ contact@mofastudio.com

🏠 www.mofastudio.com

OPPOSITE PAGE: The huge swirl made with wooden planks makes way for the workspaces.
BELOW: Use of vibrant colours lends an energetic vibe to the reception and waiting lounge.





ABOVE: Crystal clear cabins capture the essence of lively Delhi on its walls.

CENTRE: Simple white work desks with red separators encourage team spirit by combining workstations.

BELOW: Artistically placed bowler and batsmen details on planks make their presence felt every time one looks at the energetic swirl.

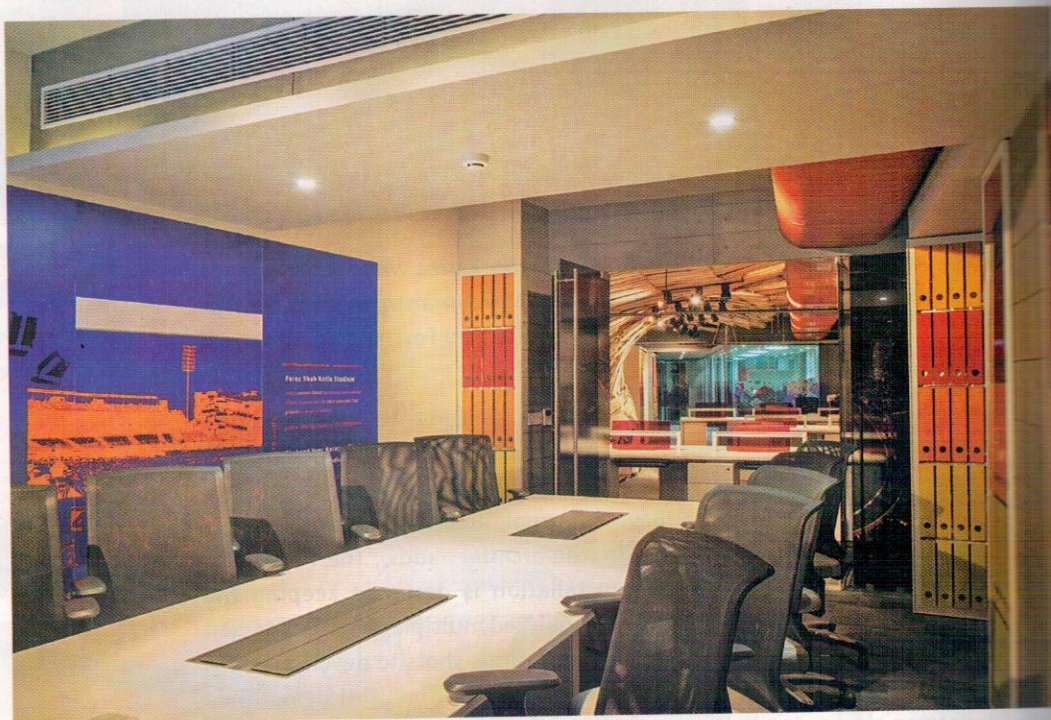


As one proceeds further, one admires the work area which further leads to glass enclosed cabins meant for senior level management meetings. 3D stickers of rickshaws, homes in Old Delhi, Red Fort, Qutub Minar, etc pasted on cabin partitions is a visual delight.

Further lending a dramatic touch to this office is the swirl structure made out of wooden strips. This design element not only adds a unique touch to the space but also forms a meeting point for employees where they can relax or have informal meetings. Explaining the thought process behind the swirl, the architect adds, "The think tank lounge inside the cloud swirl installation is designed keeping the 'work-play-meet' factor in mind. We analyzed multiple shots of batsmen and bowlers and carefully overlapped various shots to develop a swirl cloud model that truly represents various cricket balls hit by multiple batting strokes in all directions across the stadium. This Non Uniform Rational B-Spline (NURBS) model was constructed economically by using slender steel cage covered by modules of 4 in. by 3 ft. of wooden planks recycled from waste shipping pallets, a size approximately equivalent to a cricket bat. The lower half of the model was divided into trapezoidal panels, each representing a player over the past six years of the team."

This space serves dual purpose as from the outside it imitates batting strokes and from inside it echoes collective forces of thousands of spectators cheering during the match.

Note the design elements like the huge light, small LED's and AC ducting with the team's name written in several languages.



ABOVE: The cabin passage has translucent glass on one side and uses the corporate colours on the other side.

BELOW: The conference area makes use of snippets mentioning the team's performance in last three years.

The swirl space includes a small pantry too, where people sitting inside the think tank lounge can sit back and enjoy matches over a cup of tea, coffee or chilled drinks. Apart from the swirl, colours dominate the office space. "The entire look and feel of the office has been kept sporty with the controlled use of corporate reds and ambers over the neutral palette created by cement board panelling throughout the office space. The interplay of bright colours with neutral grey has further been juxtaposed with the extensive use of recycled wood planks and natural MDF panels, thereby adding another layer to the experiential depth of the office space," says the architect.



The merchandise display offers passers-by a quick glance for about what the team has for its fans.

The furniture for the office too was carefully chosen considering the youth factor. Casual in look and style options like low-back sofas and pouffes match the office theme. Vinod says, "The workspaces were designed in a manner that each person has his own space and they can also work collectively if required. In collaboration with Steelcase, the workstations make use of dynamic red acrylic panels instead of solid dividers so that co-workers can see each other on either sides and discuss their ideas. Similarly, the cabins are also made with clear glass walls so that there is transparency in discussion of ideas and thoughts. Also, it helps in removing hierarchical structure and builds a bond between the team." Light fixtures are placed accurately, giving the space the right amount of exposure; while natural light floods the office from one side.

So, the Delhi Daredevils office in a nutshell is a colourful casual zone filled with energy of the team and that of the beautiful capital city.

Text: Trisha Mahajan Photographs: Dev Singh