

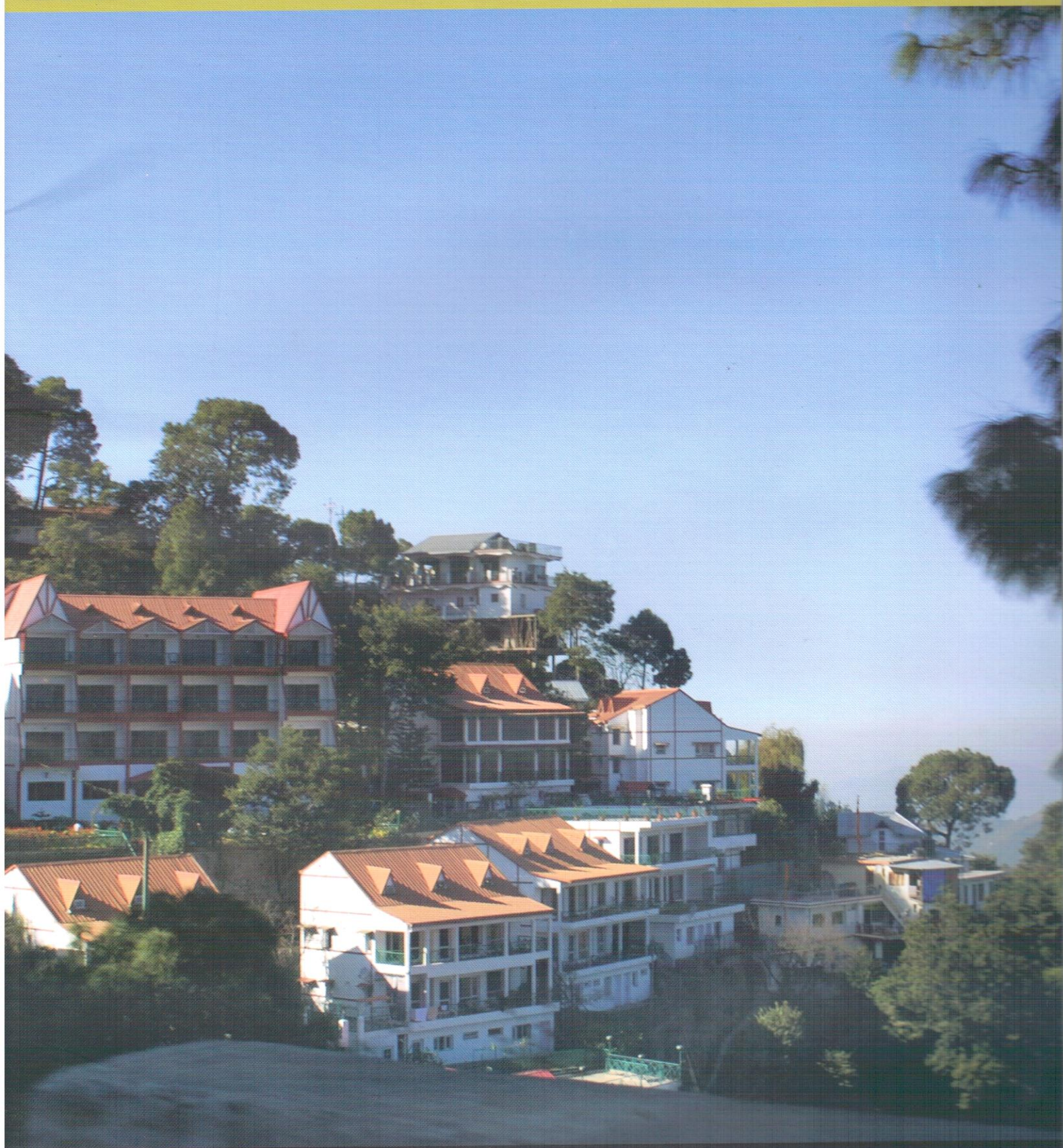


JOURNAL OF THE INDIAN INSTITUTE OF ARCHITECTS



REFEREED JOURNAL OF IIA | ISSN-0019-4913

2014 AUGUST | VOLUME 79 | ISSUE 08 | ₹.75



TOURISM

The Club House at Forest, Noida, UP

Ar Manish Gulati



Manish is an alumnus of School of Architecture, CEPT Ahmedabad. He started his practice in 2002 in New Delhi. His practice from the beginning reflected his clear approach to design - contemporary, bold and global with subtle regional / contextual interventions to concepts. His innate ability to remain abreast with technology, his deep love for the arts and sensitivity towards life always remains at core to any of his works. He has over 14 years of work experience working on institutional projects, sports infrastructure, hospitality, residential and retail. His past and current assignments include NIFT Kangra Campus, HP; DPCC Head Quarters, New Delhi; NIWS Campus Goa; ITM Campus, Gwalior and Sports Academies for Directorate of Sports and Youth Welfare, Hospitality and Retail projects, etc. His forte and driving passion till date remains design and innovation. Majority of the projects in MOFA have been won and commissioned under him as a result of design competitions.

contact@mofastudio.com

Located in National Capital Region in Noida, Forest Club is a recreation club of high end residential project of Omaxe Limited. It is located partially on ground and partially subterranean.

The programme includes a spa, restaurant over water, squash court, cards room, multipurpose room, bar, state of the art gymnasium, snooker room, etc. The Club House at Forest is

designed as an outcome of the site conditions nestled in the south-east corner of the housing. The site offered a very little scope of development above ground.

Out of the minimum area required to construct a 15000 sft club, only 25 percent of it was available above ground as the rest had already been consumed in the total Floor Space Index available for the entire housing.



Fig 1: Basement Floor Plan

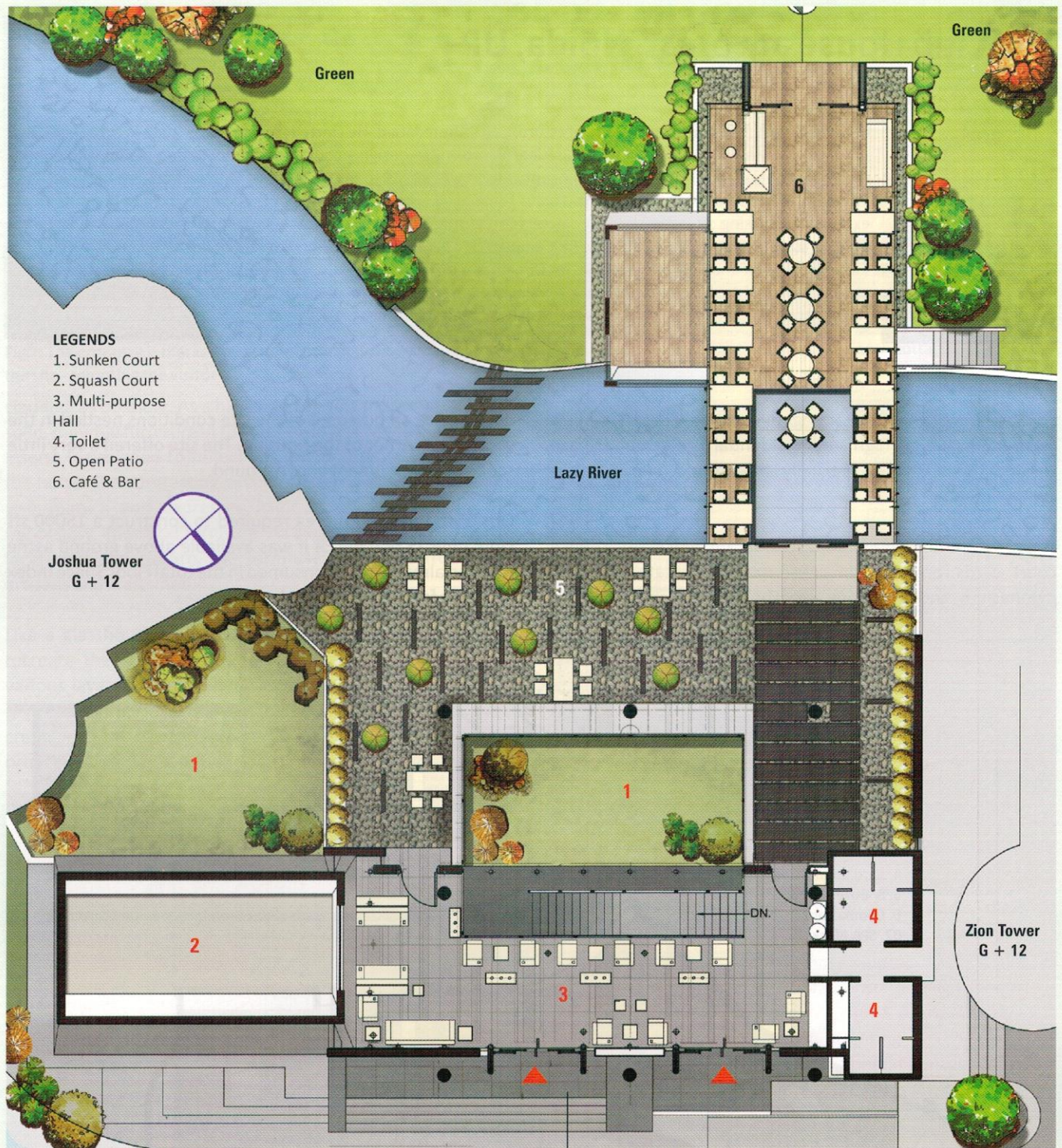


Fig 2: Ground Floor Plan

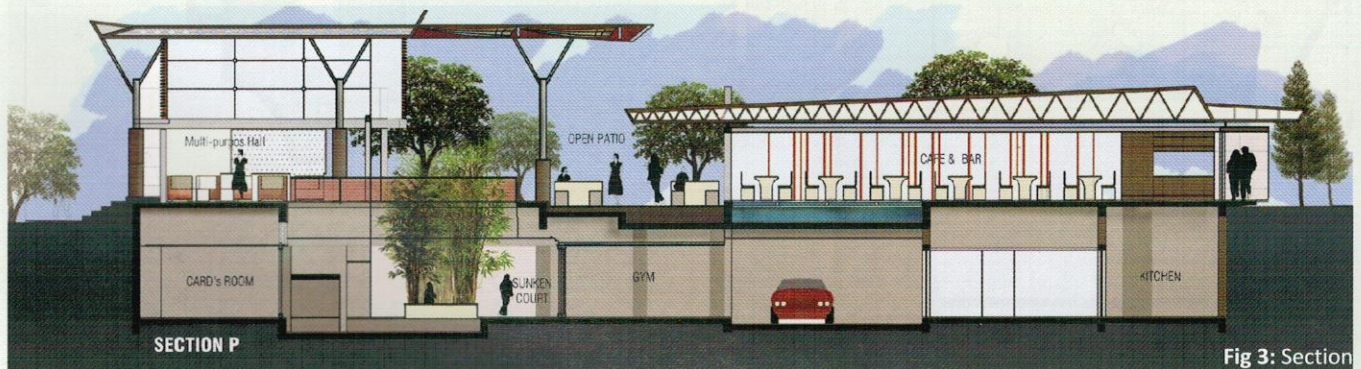


Fig 3: Section



Fig 4: Cafe with a glass floor over the rivulet

This started a quest for spreading below ground as a subterranean architecture extracting as much area possible from the underground basement parking, since that was free of FSI.

The design was conceived as a below ground building with a

series of sunken courts and skylights to receive the much required sunlight in a deep gorge like situation already created by the two 12-storey adjoining towers.

All the recreational activities such as the gymnasium, snooker room, cards room and the squash court were all placed



Fig 5: Semi open deck overlooking the artificial rivulet

around two interconnected sunken courts. These courts provided sufficient sunlight and the green areas to the entire basement and created a secluded environment.

On ground two functions were placed strategically, a multipurpose congregation space and a restaurant. The multipurpose hall was placed as a ubiquitous double-height block that formed an interlink from the entrance on one side and opening to the central green space of the housing on the other side.

From this block, after the semi open space lays a long arm-like restaurant like a glass bridge over a water rivulet (one of the key landscape features of the housing) jutting into the central landscape, literally connecting the club with the entire housing.

The above ground structure is designed in steel with large over hanging roofs reminiscent of temporary oriental pavilions sitting within the landscape. A play of louvers, glass floor within the restaurant and slender tree like steel



Fig 6: Staircase entry from the Multipurpose lounge



Fig 7: South western facade



Fig 8: North-Eastern entrance

columns; all enhance this dramatic symphony of architecture over the large canvas of landscape that surrounds it. Along with all this, few special features were incorporated in the design.

- The clear toughened glass floor of the restaurant of the club spans over the water rivulet making it seem like sitting on water.
- Gymnasium and other facilities surrounding the courtyard placed as raised pavilions.
- Internal sunken Bamboo Court.
- Pebble and bamboo garden on the ground floor.
- Tensile bringing in light and ventilation and shade.
- Wooden reclaimed and stone benches as landscape.
- Squash court with a skylight.



Fig 9: Sunken Court

PROJECT DETAILS

Design Team	: Manish Gulati, Tanushree Gulati, Aakriti Sood, Sajal Das
Project Completion:	2007
Project Cost	: ₹.6 Crores



Fig 10: Outdoor Deck

Golden Tusk Resort, Uttarakhand

Ar Manish Gulati



MOFA designs a true Agro Resort. The design intent was to give a firsthand experience of countryside living to the urban travelers and sensitize them to the idea of living with nature, effectively utilizing resources and minimizing waste. The programme also includes an animal farm with poultry, cattle, goats, fish and even an elephant for the rides around the forest.

The experience within the resort would include a day-out at the dairy and the poultry farm. Further, there is a true emphasis on an organic vegetable, fruit and herbal garden from where the fresh produce along with the produce from the dairy and the poultry farm would be served in the gourmet restaurant.

Abutting Jim Corbett National Park, Bijrani Range and Dhela river, viz. the location and design both, the Golden Tusk Resort reunites cosmos and nature with mankind. The ideology of meeting and observing nature is clearly woven into the architecture.

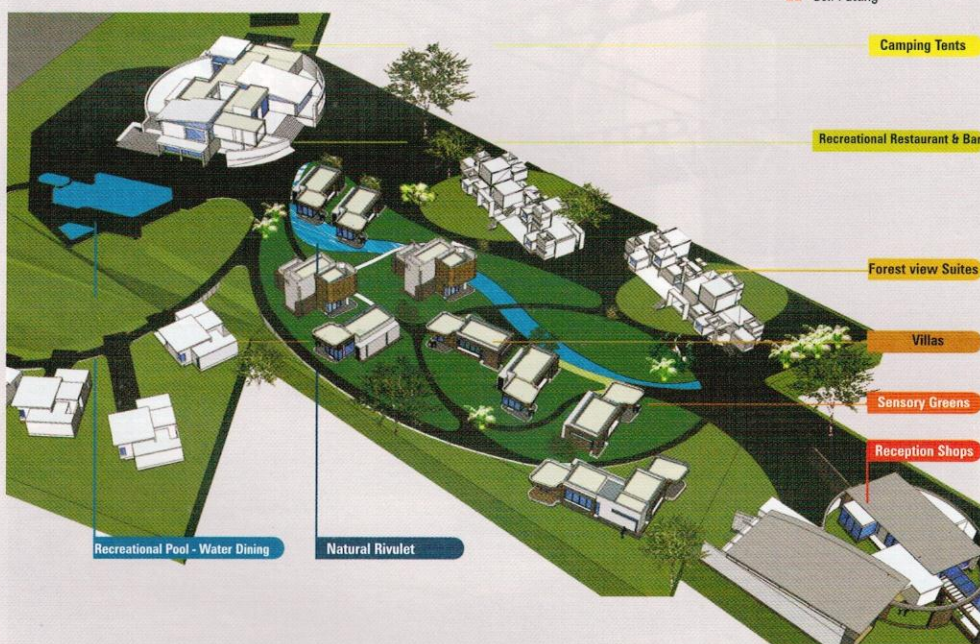


Fig 1: Conceptual view of the site



Fig 2: Masterplan



ELEVATION

Fig 3: Section

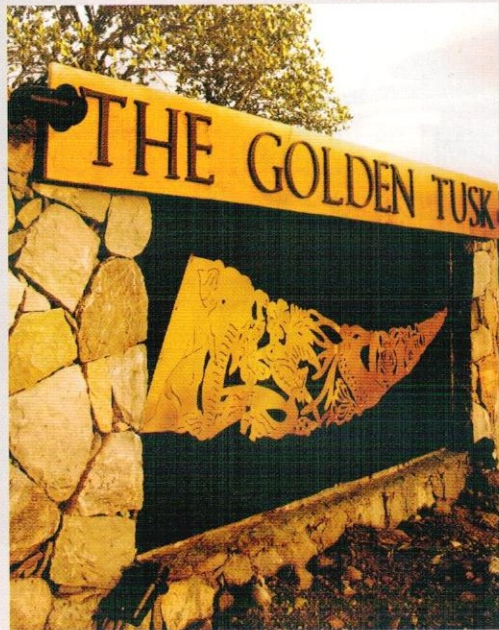


Fig 4: Feature wall at entrance

Right from the reception, exhibition gallery meant for nature lover photographers, residential accommodation of various kinds (forest view suites, villas, and luxury tents), a gourmet restaurant, swimming pool, recreational areas and spa are all arranged along a water rivulet that runs like a spine throughout the length of the site with multiple sit-out spaces and porches.



Fig 5: Forest view villas



Fig 6: Villas



Fig 7: Reception & Conference

The water rivulet itself is created by channelizing a natural stream of water that runs through the site. The villas and suites all have buffer spaces in the form of porches that

become a part of the surrounding landscape carefully created to invite the local birds. Throughout the resort, the use of local stone masonry, reclaimed wood carpentry and metal works are all reflections of the local craftsmanship and materials of the surrounding regions that maintain a sensitive bond of sustainability by keeping the old crafts alive.





Fig 9: Restaurant



Fig 11: Forest view suite

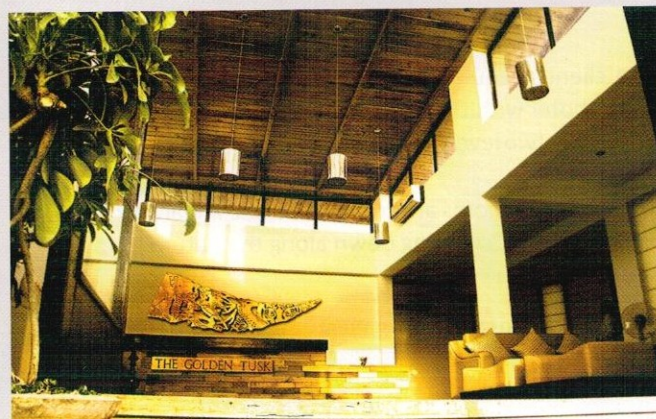


Fig 10: Reception Lobby

Apart from above a feature of growing and maintaining organic gardens through conducted workshops within the resort teaches the city dwellers the concept of sustainability and self-sufficiency and minimizing the waste.

PROJECT DETAILS:

Client	: Sanjay Lakhota, Ivory Destinations Pvt Ltd
Design Team	: Manish Gulati, Tanushree Gulati, Sebastian Peter, Priyanka Mahajan, Richa Gupta
Site Area	: 28,000 Sq M
Built-Up Area	: 3700 Sq M
Structural consultant	: Hitesh Paul Gupta
Landscape consultant	: Rajendra Nijhawan (Bhimtal)
Project Duration	: Feb 2010-2012
Photography	: Dev Singh, Mridul Sharma



Fig 12: Restaurant with Pool