

MY SPACE : ARCHITECTURE BRIO PATCH DESIGN STUDIO UNCOVERED DESIGN DESTINATION : VALENCIA

HOME REVIEW

VOL 13 ISSUE 6 JUNE 2014 TOTAL PAGES 164

RS 100 HOME-REVIEW.COM

STEAMING WITH IDEAS
ESSTEAM ARCHITECTS

M:OFA STUDIO'S
REJUVENATING
MONSOON

A MODERN AVATAR

ROOSHAD SHROFF UNITES TRADITIONAL CRAFT AND CONTEMPORARY DESIGN

KITCHEN TRENDS 2014 FROM CABINETS & DRAWERS TO SINKS, FAUCETS & MUCH MORE

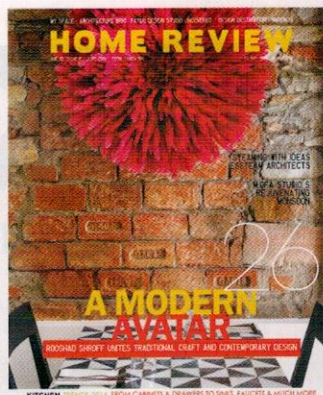


36

From Barcelona to Bahrain, Cuban American artist Jorge Rodríguez-Gerada does things king-size. His ephemeral artworks span several acres and fade away just like warmth does after an embrace.

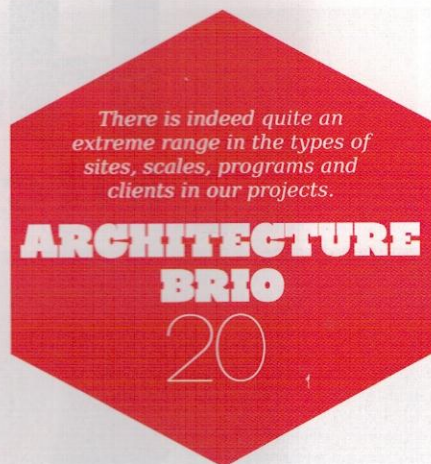


Home to an estimated 15,000 single-room factories, everything gets manufactured and recycled here. A trip to Asia's largest slum, Dharavi.



Cover Story

Architect Rooshad Shroff transforms a 1940's building into a contemporary space filled with a remarkable juxtaposition of geometry and textures.



KITCHEN TRENDS 2014

From glossy laquered cabinets to award winning appliances, we bring you the latest in kitchen styles and appliances from the best in business.



STEAMING WITH IDEAS

'Samanvay' the office building of Essteam, an architectural and urban design practice in Surat, is a perfect integration of functions, materials and ideas.

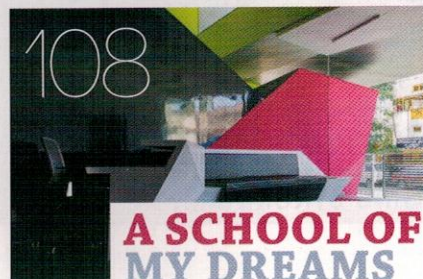
The Merry Confluence

From garments, photographs and furniture to paintings and even songs, Jaipur based Teatro Dhora relishes and retails all art forms.



REJUVENATING MONSOON

Designed by M:OFA Studio, the Monsoon salon cum spa exhibits its exuberance through a range of bespoke textures, lighting features and design strategies.



A SCHOOL OF MY DREAMS

Planet Kids, a school designed by Bengaluru based design firm Cadence looks like it's straight out of Grimm's Fairy Tales or Arabian Nights.



R

Rooshad Shroff has been extremely quick to bag a series of envious commissions soon after his return from working with Zaha Hadid Architects in London and OMA New York. With a flair for experimenting with traditional craft and contemporary design, the Jaipur Modern store is the latest on Rooshad's list of cultured design solutions.

At Jaipur Modern, Rooshad has melded the dynamics of restorative architecture, contemporary interiors and bespoke furniture into a unified program transforming a 1940's building into a stylish retail destination. His desire to engage with traditional embroidery and craft has infused an element of originality and charm into the décor that stays clear of common design convention.

Architect Snehal Shah's office in Surat is a reflection of their mantra - 'honesty in material as well as spirit'. This motto is clearly evident in the layout, material choice and textural qualities that unify the space. Giving the design an additional edge is their commitment to zero-waste. This ensures old shuttering material is used to create peripheral storage units, while empty tin containers become personal mailboxes after a lick of paint. Even a fallen palm tree has been reused to make a dining table and chairs. These elements of 'sustainable' surprise add a silver lining to the firm's ethos of integrating function, material and ideas.

Manish Gulati, Principal Architect at M:OFA is certainly going places. Recently selected to exhibit at the Venice Biennale, his belief of not treading the beaten path is evident in the creation of a unique identity for a salon chain. Focussing on keywords like 'pure' and 'unadulterated', the team zone in on a design language that is earthy and rustic. Using materials cleverly and in their original state, the designers outline ideas sans any frills creating an unpretentious natural haven that welcomes and delights.

Anish Bajaj, Editor
anish@marvelinfomedia.com



A REJUVENATING MONSOON



When it was a question of creating an innately soothing and peaceful space, such as a salon cum spa, M:OFA Studio just went ahead and decoded the essence of 'Monsoon' into architectural notes through a range of colours, textures, lighting features and design strategies.

The first showers of monsoon, like heavenly blessings, never fail to wash away the summer heat and dust and open up every pore to the heady smell of the awakening of life. It urges us to close our eyes, breathe in and simply revel in the calmness that sets in. This magic and its myriad experiences that touch us in this season, have been translated into an architectural narrative, in the aptly named Monsoon Salon and Spa, by New Delhi based design practice M:OFA Studio.

Located in a high end neighbourhood, the M:OFA team has designed this salon and spa to foster a naturally soothing environment that easily transports city stressed minds far away from the loud metropolis. Says Manish Gulati, Principal Architect at M:OFA, "the brief was to create a brand identity for Monsoon Salons and position them with a unique language concurrent with their work philosophy on a budget of Rs 2,500 per square feet maximum."

Text By K Parvathy Menon
Photographs Manish Gulati Courtesy
M:OFA Studio Pvt Ltd



The macro proportioned light fixtures that hang like tulips in the rain are created out of recycled loudspeakers popularly known as "Bhompooos" in India.



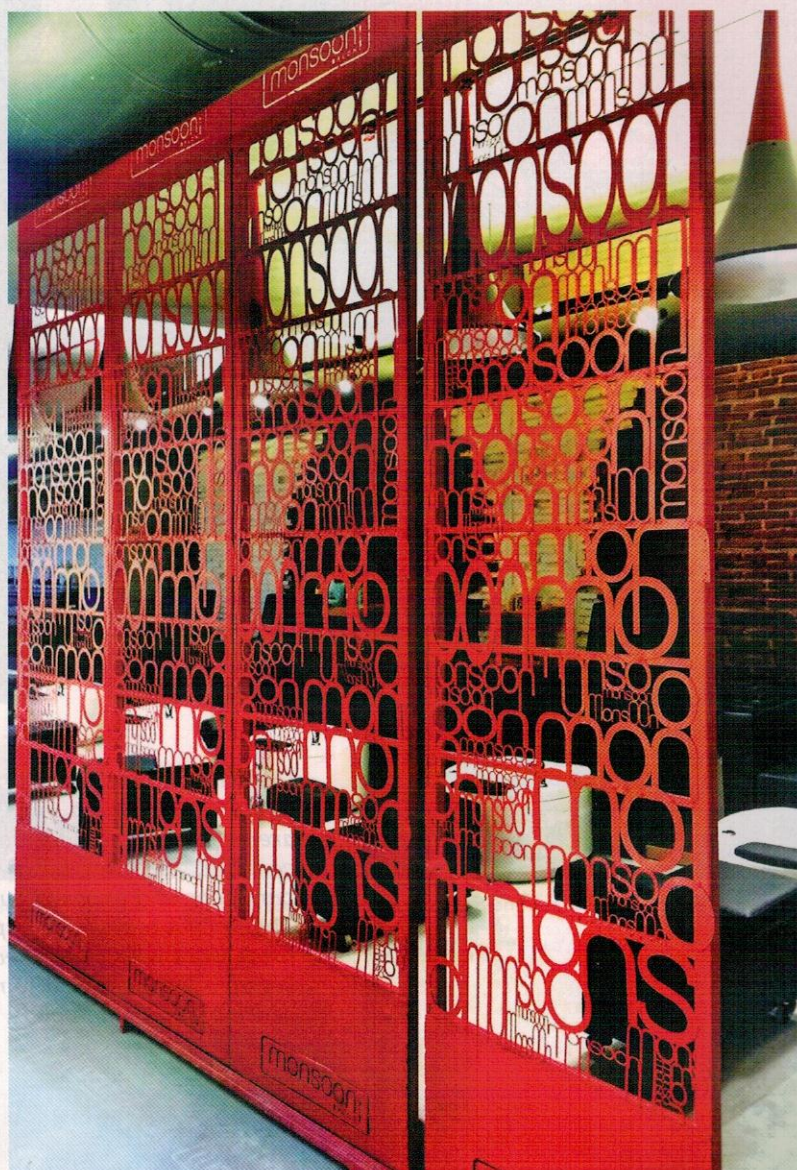
Suspended steel shelves create what the team describes as, "a feeling of openness."

Stepping into the salon, our senses are bombarded with a jumble of colours, textures and fixtures. There is nothing voguish about the space; instead the overwhelmingly earthy and rustic appearance makes one feel at home instantly.

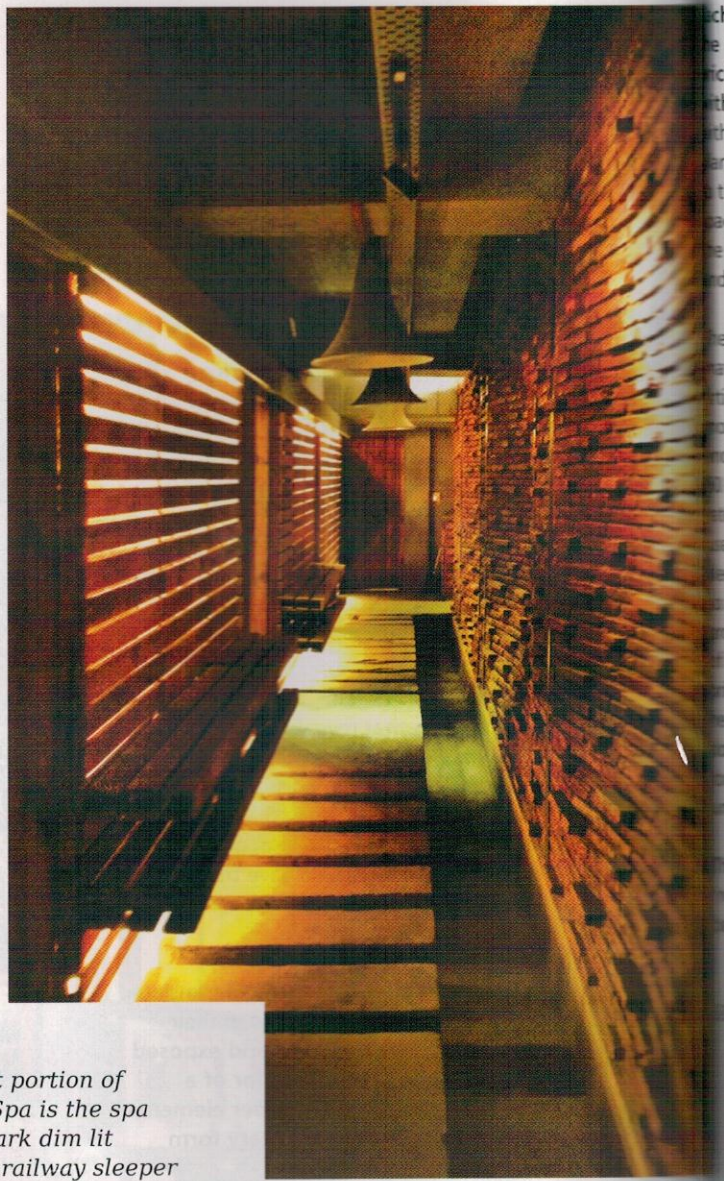
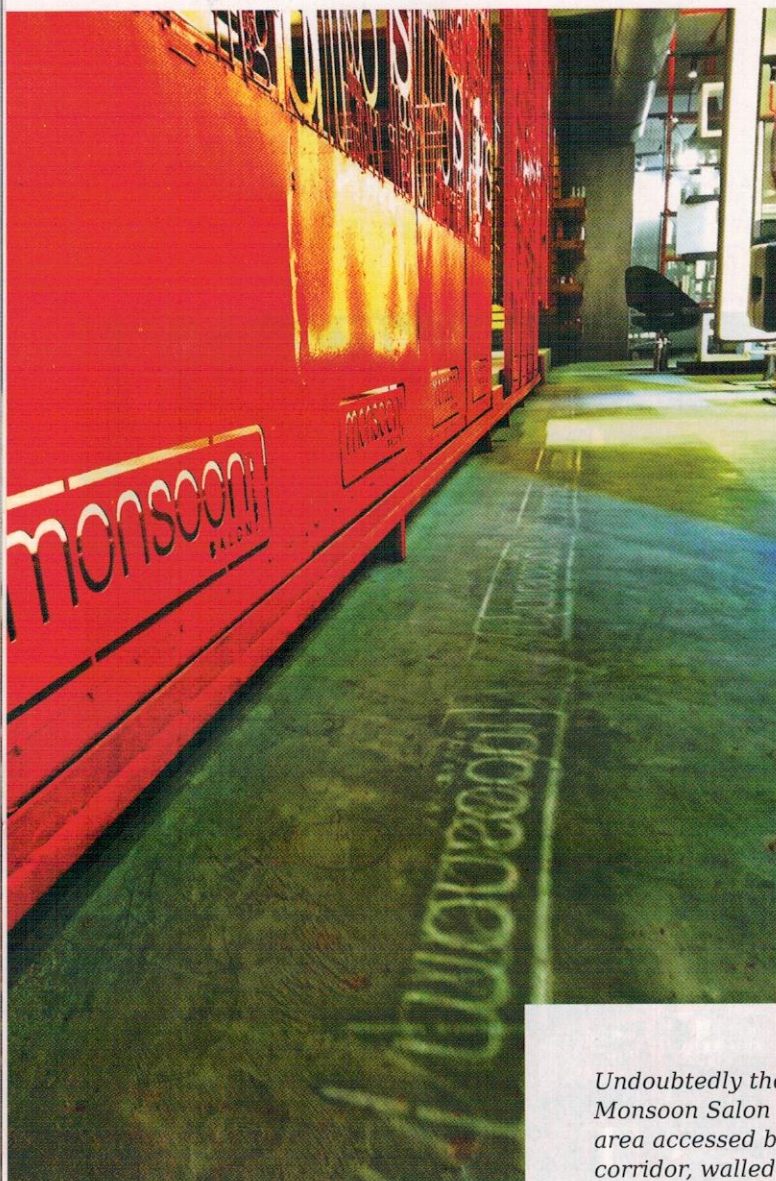
Trying to explain the spatial quality in 'Monsoon', Architect Manish Gulati says, "Monsoon in India has multiple connotations - an onset of cool winds after the scorching summer heat, tinkling of the droplets of rain, and the cleansing phenomenon that reveals the purest in nature. Pure and unadulterated. It is this experience of the monsoon showers washing away all grime and leaving behind a cleansed, sparkling, gleaming, rejuvenated feel that we have tried to imbibe in the spirit of the interior spaces for the Monsoon salons."

'Pure and unadulterated' is also translated through materials being used in their pure form. Epoxy flooring and exposed concrete generate an interior of a shell like feel, where all other elements take a desired complimentary form and grow.

Standing in the large open planned interior space, one cannot miss the way the design team has used partitions and shelves to segment the volume into three separate sections. Cordoning the styling stations and the wet area i.e. the manicure, pedicure and shampoo stations, are bright red MS Jaali partitions, on which the word 'monsoon' in different font sizes becomes art.



The word 'Monsoon' in different font sizes are reminiscent of falling drops of rain on a glass pane is seen on the screens.



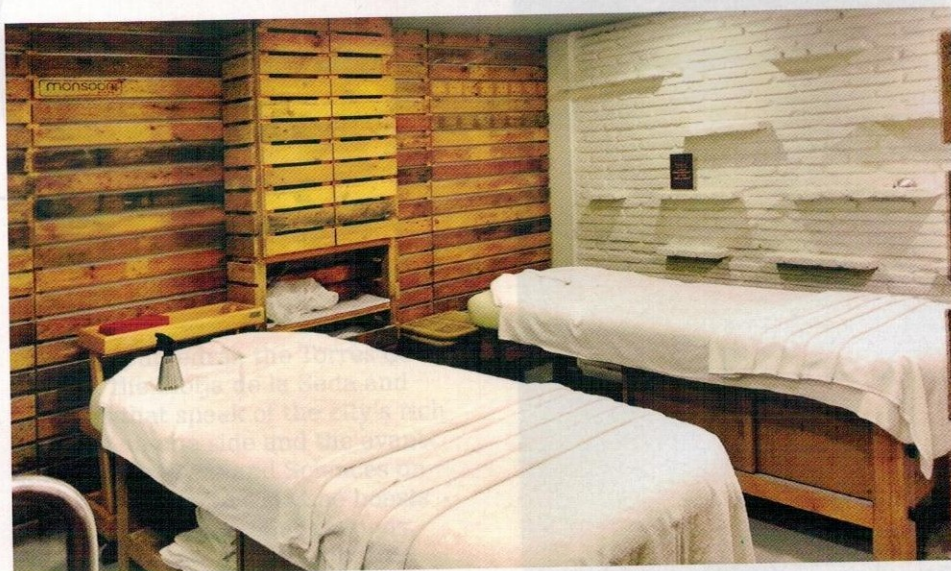
Undoubtedly the best portion of Monsoon Salon and Spa is the spa area accessed by a dark dim lit corridor, walled with railway sleeper partitions and exposed curved brick. The M:OFA team have expertly used brick work with controlled lighting to set up a lacuna aimed to relax every sense of the human body.

Each section has a distinct identity, like the wet zones are marked by exposed brick walls painted white and accented with circular red patches. These along with shelves made of rough cut wood and racks reclaimed from shipping pallets add to the 'unadulterated' character of the space. Staying true to the design ethos, the ceiling is kept devoid of false panels and only has a few lights.

The design team at M:OFA have used natural materials, textures and both natural and artificial lighting to create the perfect mood setting requisite of any good salon and spa. "To adhere to a budget almost 50% lower than contemporary market rates for salons," explains the team, "we used recycled shipping pallets, railway sleepers, MS instead of stainless steel and iron. Keeping to the industrial look we provided finishes with sealants instead of plaster and paint. Exposed RCC and brickwork and exposed ducting have helped tremendously in keeping the costs down; the same materials also came together as a composition to create a unique identity."

The M:OFA team once again proves that 'not treading the beaten path' can indeed be a delightful and rewarding experience.

contact@mofastudio.com
media@mofastudio.com



The spa is as rustic and earthy as it gets with recycled shipping pallets and exposed brick walls.