

JUNE 2014 ₹175

# ARCHITECTURE+DESIGN

AN INDIAN JOURNAL OF ARCHITECTURE

**DESIGN FOR  
RECREATION**

ART IN  
PUBLIC SPACES



VOLUME 31 ISSUE 6



INR 175-A+D-JUNE 2014





# Living with Nature

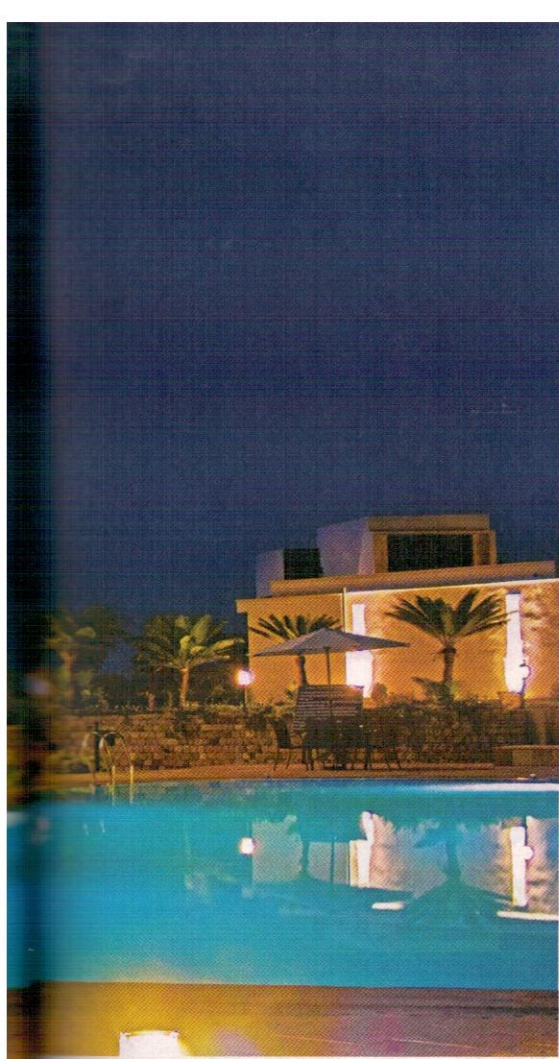
**Project:** The Golden Tusk Resort, Ramnagar (Nainital), Uttarakhand  
**Architects:** M:OFA Studios Pvt Ltd, New Delhi

The architects designed the resort with the intent to give a firsthand experience of countryside living to the urban travellers and sensitise them to the idea of living with nature, effectively utilising resources and minimising waste. Apart from being amidst nature, the project also includes an animal farm with poultry, cattle, goats, fish and even an elephant for the rides around the forest. The cottages resonate the local materials expressed in a contemporary design. The experience within the resort includes a day-out at the dairy and the poultry farm. Further, there is an

emphasis on organic vegetable, fruit and herbal garden from where the fresh produce along with the produce from the dairy and the poultry farm are served in the gourmet restaurant throughout the day.

Abutting Jim Corbett National Park, Bijrani Range and Dhela river, viz a viz the location and design of the resort reunites cosmos and nature with mankind. It rekindles, restores and respects this bond. The ideology of meeting and observing nature is woven into the architecture planning and the program formulated for the resort.









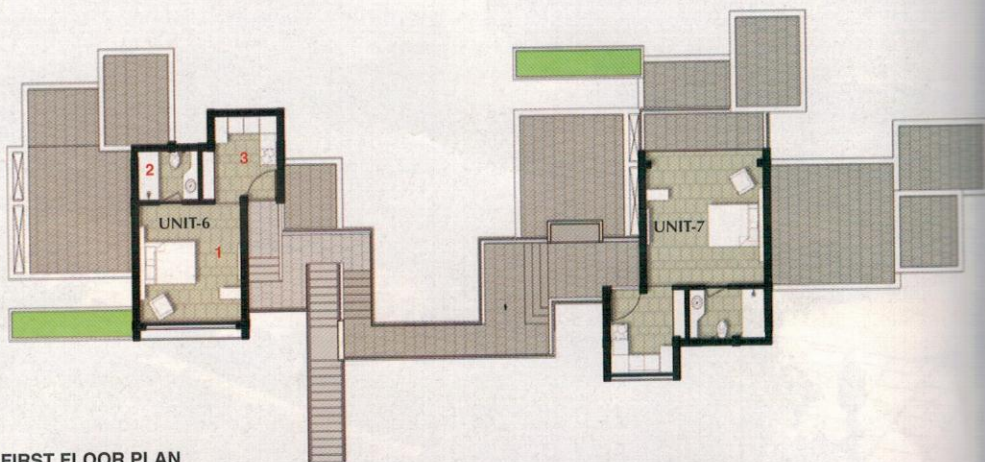
MASTER PLAN

## FOREST VIEW SUITES - TYPE A



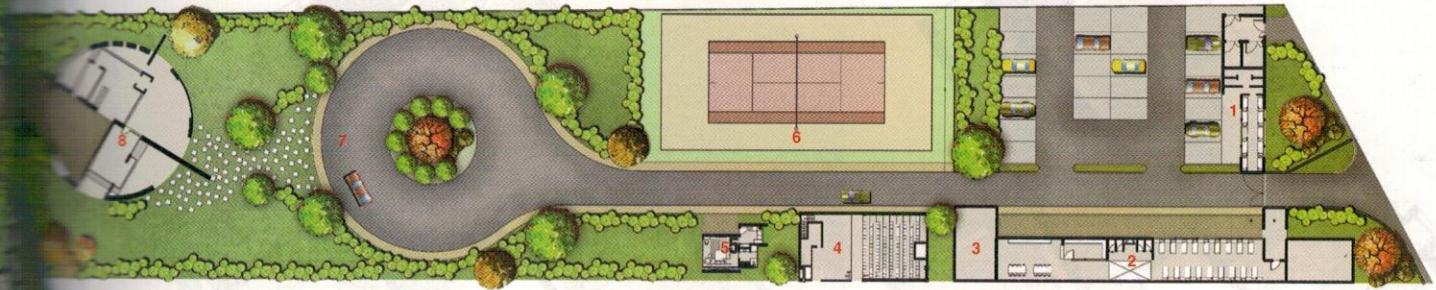
GROUND FLOOR PLAN

- 1. BEDROOM
- 2. TOILET
- 3. LOUNGE



FIRST FLOOR PLAN



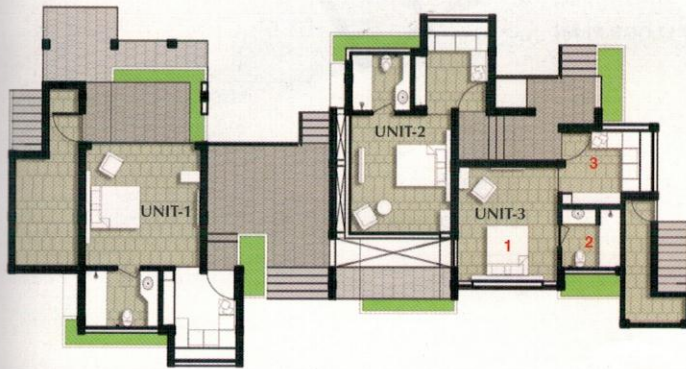


1. DRIVER'S DORMITORY
2. STAFF QUARTERS
3. ELECTRICAL/MAINTENANCE
4. CONFERENCE HALL
5. MANAGER'S RESIDENCE
6. CATTLE FARM
7. DROP-OFF ZONE
8. RECEPTION

9. VILLA TYPE A
10. VILLA TYPE B
11. VILLA TYPE C
12. SPA/ LIBRARY
13. FOREST VIEW SUITES TYPE A
14. FOREST VIEW SUITES TYPE B
15. LUXURY VILLAS
16. KIDS POOL

17. FILTRATION CHAMBER
18. SWIMMING POOL
19. POOL DINING
20. RESTAURANT BAR/ BUFFET HALL
21. TENT UNITS
22. GOLF PUTTING

## FOREST VIEW SUITES - TYPE B



GROUND FLOOR PLAN



FIRST FLOOR PLAN

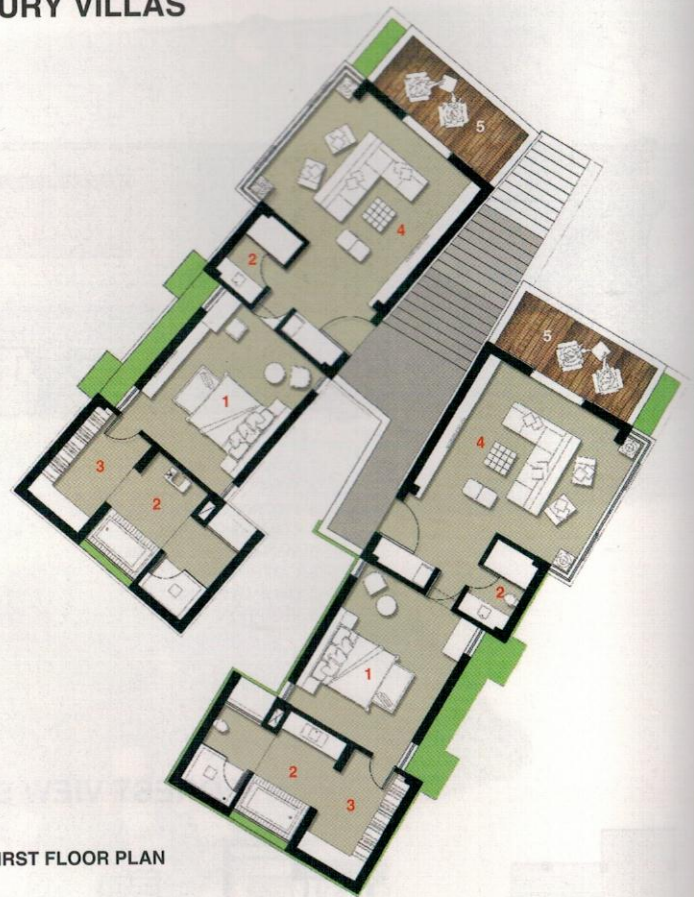




## LUXURY VILLAS



GROUND FLOOR PLAN



FIRST FLOOR PLAN

- 1. BEDROOM
- 2. TOILET
- 3. DRESSER
- 4. LOUNGE
- 5. OUTDOOR DECK



Built with locally available materials, the design emphasises on developing a rich experience through a cosmological relationship between the user and the pure surrounding nature. The change in seasons, the change in light throughout the day as in the Zen philosophy, were considered as prime ideas to uplift the human spirit and provide solace to the souls coming from the jostling loud urban life to spend a weekend in the resort.

Right from the reception, exhibition gallery meant for nature lover photographers, residential accommodations of various kinds (forest view suites, villas and luxury tents), a gourmet restaurant, swimming pool, recreational areas and a spa are all arranged along a water rivulet that runs like a spine throughout the length of the site with multiple sit-out spaces and porches. The water rivulet itself is created by channelising a natural stream of water that runs through the site, unobstructed yet fresh.

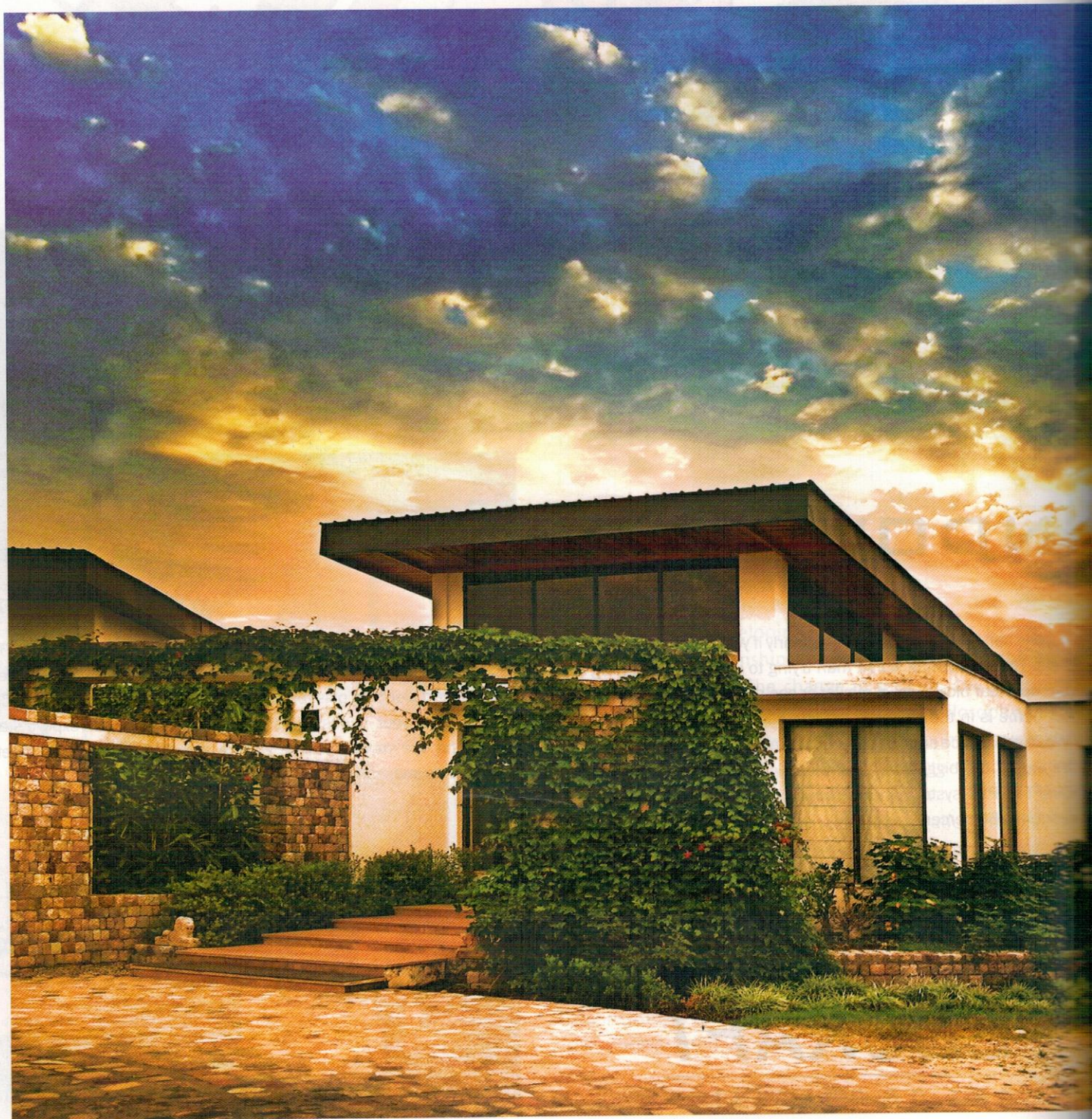


# LUXURY VILLAS

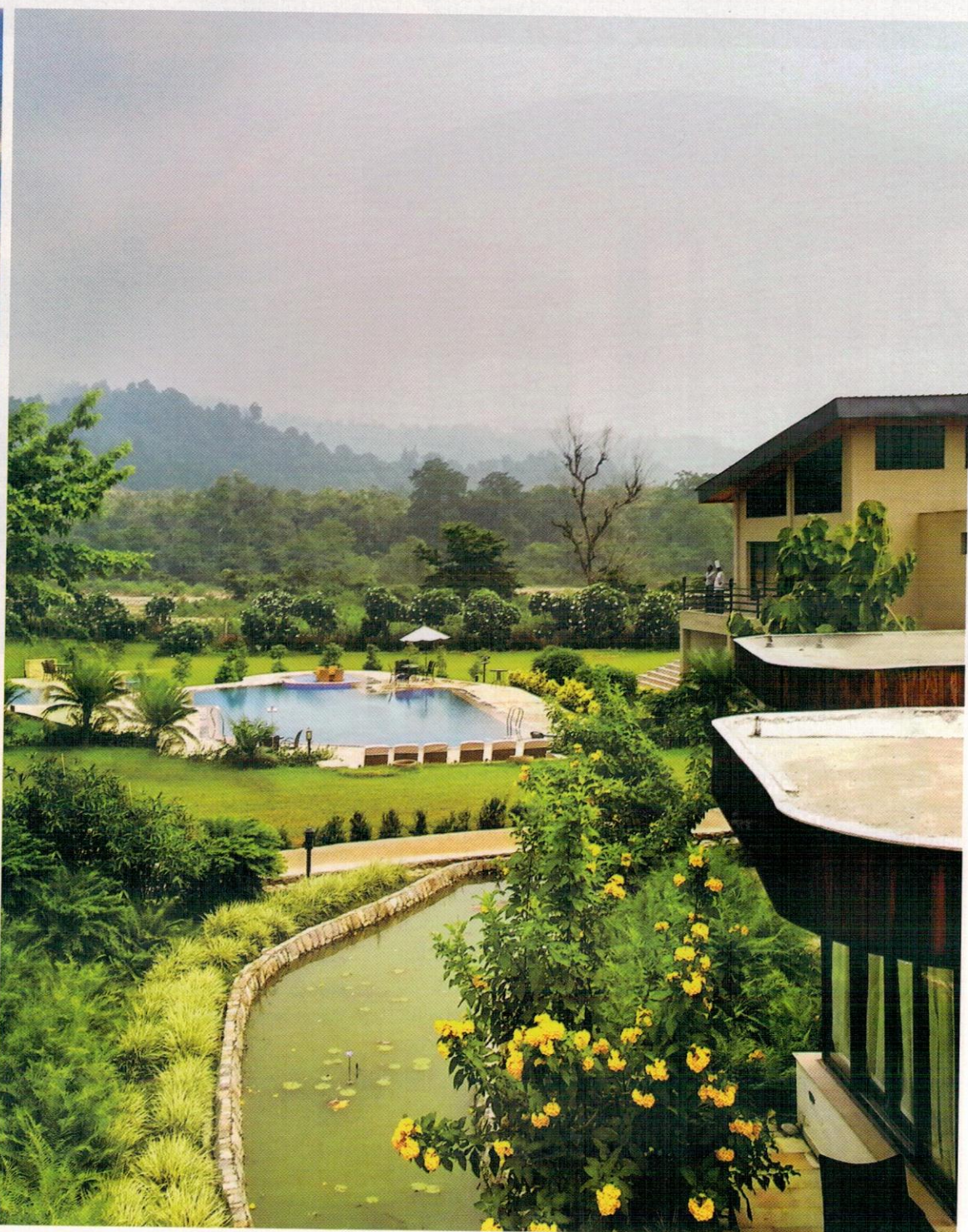
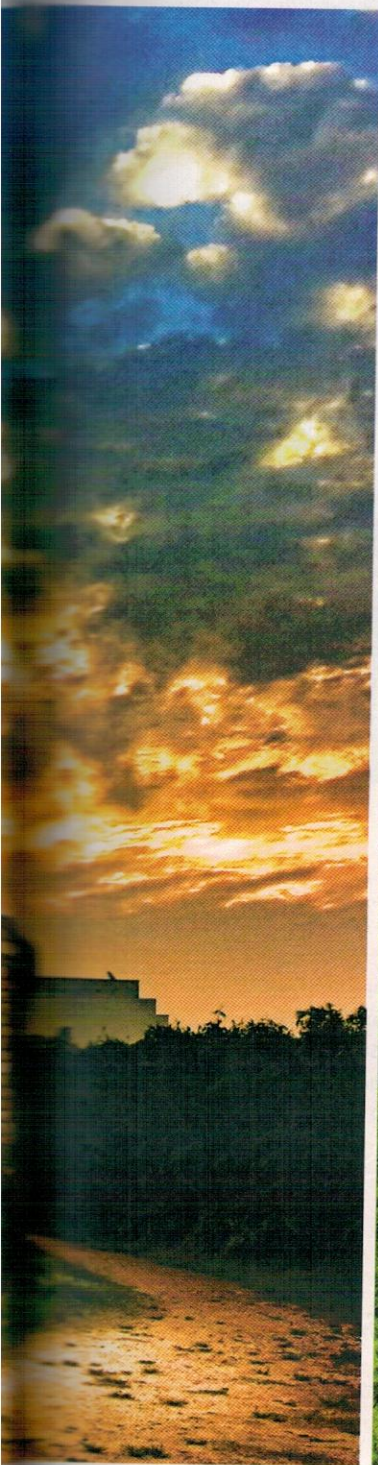
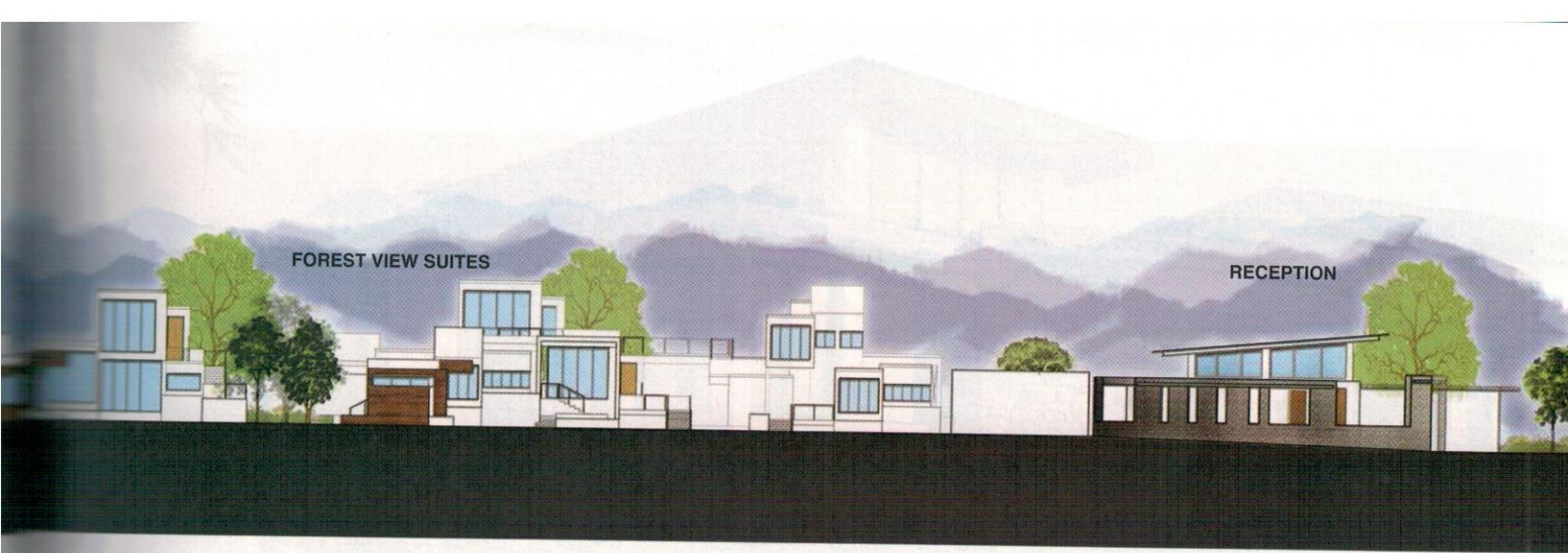
RESTAURANT

VILLAS

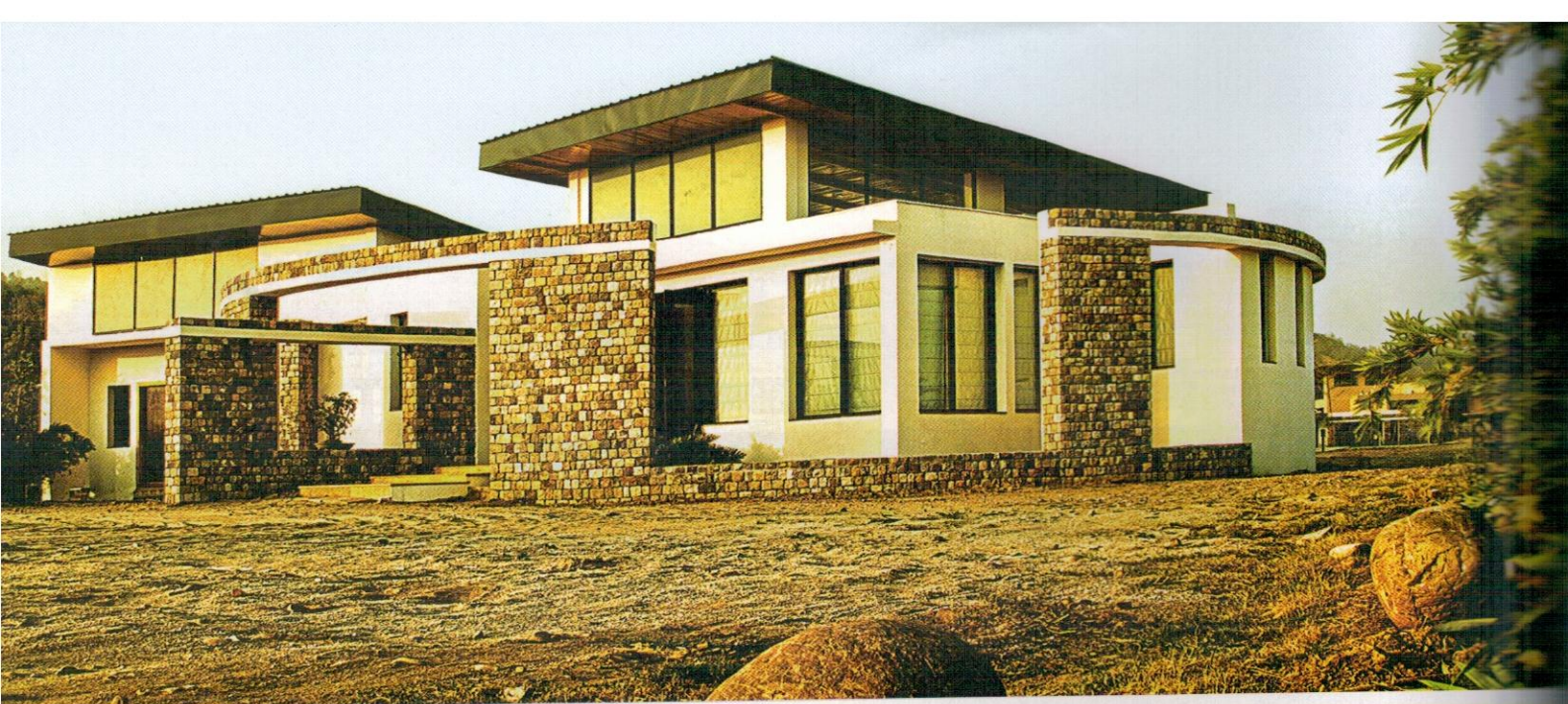
SECTION











The villas and suites all have buffer spaces in the form of porches that become a part of the surrounding landscape, carefully created by species that not only invite the local birds, but also tease all the senses right from vision, taste, smell and touch. Throughout the resort, the use of local stone masonry, reclaimed wood carpentry and metal works all reflect the local craftsmanship and materials of the surrounding regions that maintain a sensitive bond of sustainability by keeping the old professions alive. Apart from growing and maintaining organic gardens through conducted workshops within the resort teaches the city dwellers the concept of sustainability and self-sufficiency and minimising the waste. ✚

*Photo credit: Dev Singh, Mridul Sharma*

#### FactFile

**Client:** Sanjay Lakhotia (Ivory Destinations Pvt Ltd)

**Design Team:** Manish Gulati (Principal Architect), Tanushree Gulati (Principal Planner), Sebastian Peter, Priyanka Mahajan, Richa Gupta

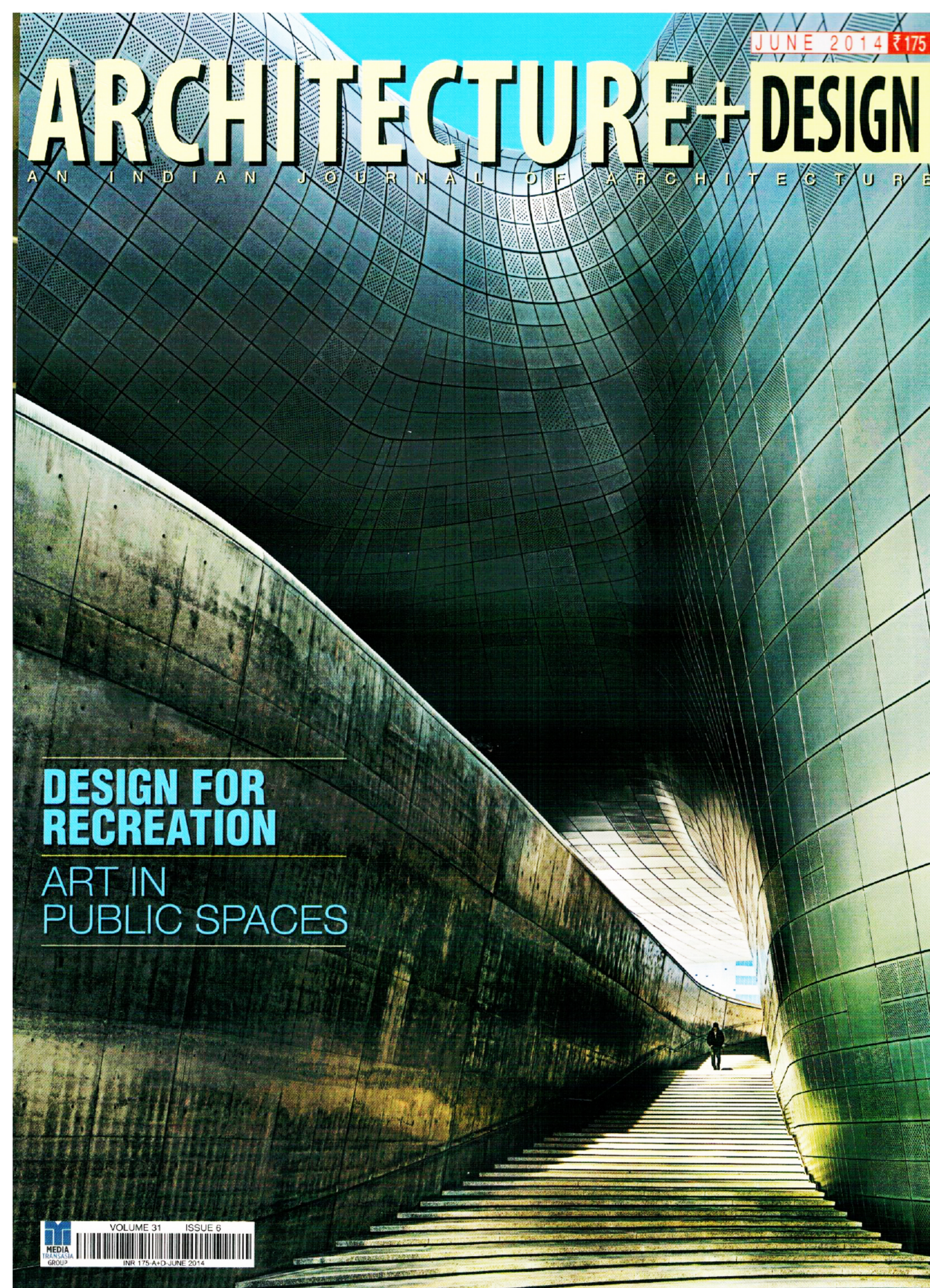
**Consultants:** Hitesh Paul Gupta (Structural), MOFA Studios Pvt Ltd (Mechanical, Electrical, Civil, HVAC, Plumbing, Façade), Rajendra Nijhawan (Landscape), Ivory Destinations Pvt Ltd (PMC)

**Contractors:** Ivory Destinations Pvt Ltd

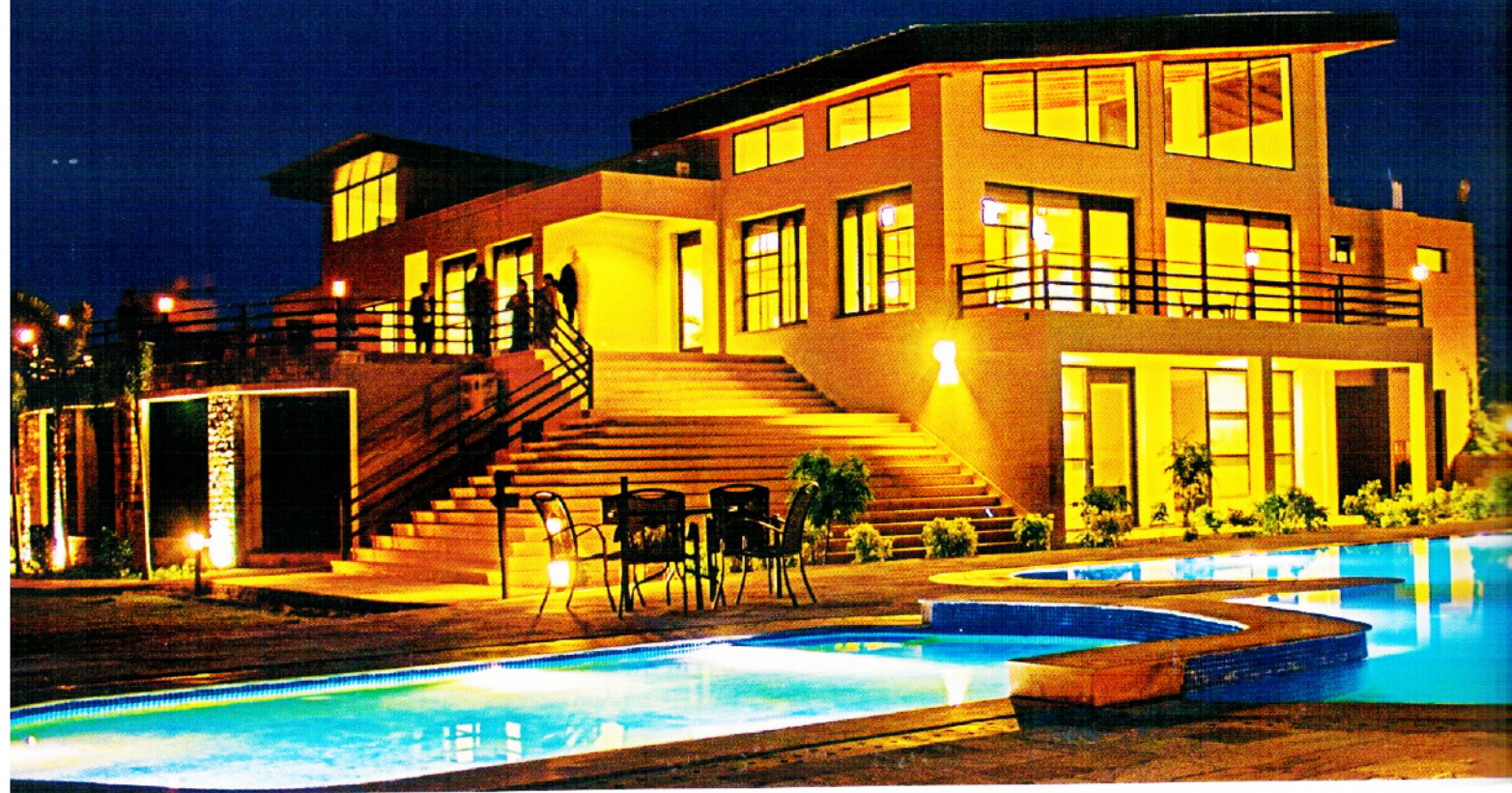
**Built-up area:** 3700sq m (approx)

**Year of completion:** 2012





## Recreational Architecture



## Living with Nature

**Project:** The Golden Tusk Resort, Ramnagar (Nainital), Uttarakhand  
**Architects:** M:OFA Studios Pvt Ltd, New Delhi

The architects designed the resort with the intent to give a firsthand experience of countryside living to the urban travellers and sensitise them to the idea of living with nature, effectively utilising resources and minimising waste. Apart from being amidst nature, the project also includes an animal farm with poultry, cattle, goats, fish and even an elephant for the rides around the forest. The cottages resonate the local materials expressed in a contemporary design. The experience within the resort includes a day-out at the dairy and the poultry farm. Further, there is an

emphasis on organic vegetable, fruit and herbal garden from where the fresh produce along with the produce from the dairy and the poultry farm are served in the gourmet restaurant throughout the day.

Abutting Jim Corbett National Park, Bijrani Range and Dhela river, viz a viz the location and design of the resort reunites cosmos and nature with mankind. It rekindles, restores and respects this bond. The ideology of meeting and observing nature is woven into the architecture planning and the program formulated for the resort.







#### FOREST VIEW SUITES - TYPE B



#### FOREST VIEW SUITES - TYPE A



#### LUXURY VILLAS



Built with locally available materials, the design emphasises on developing a rich experience through a cosmological relationship between the user and the pure surrounding nature. The change in seasons, the change in light throughout the day as in the Zen philosophy, were considered as prime ideas to uplift the human spirit and provide solace to the souls coming from the jostling loud urban life to spend a weekend in the resort.

Right from the reception, exhibition gallery meant for nature lover photographers, residential accommodations of various kinds (forest view suites, villas and luxury tents), a gourmet restaurant, swimming pool, recreational areas and a spa are all arranged along a water rivulet that runs like a spine throughout the length of the site with multiple sit-out spaces and porches. The water rivulet itself is created by channelising a natural stream of water that runs through the site, unobstructed yet fresh.





SECTION



The villas and suites all have buffer spaces in the form of porches that become a part of the surrounding landscape, carefully created by species that not only invite the local birds, but also tease all the senses right from vision, taste, smell and touch. Throughout the resort, the use of local stone masonry, reclaimed wood carpentry and metal works all reflect the local craftsmanship and materials of the surrounding regions that maintain a sensitive bond of sustainability by keeping the old professions alive. Apart from growing and maintaining organic gardens through conducted workshops within the resort teaches the city dwellers the concept of sustainability and self-sufficiency and minimising the waste. +

Photo credit: Dev Singh, Mridul Sharma

#### FactFile

**Client:** Sanjay Lakhotia (Ivory Destinations Pvt Ltd)  
**Design Team:** Manish Gulati (Principal Architect), Tanushree Gulati (Principal Planner), Sebastian Peter, Priyanka Mahajan, Richa Gupta  
**Consultants:** Hitesh Paul Gupta (Structural), MOFA Studios Pvt Ltd (Mechanical, Electrical, Civil, HVAC, Plumbing, Façade), Rajendra Nijhawan (Landscape), Ivory Destinations Pvt Ltd (PMC)  
**Contractors:** Ivory Destinations Pvt Ltd  
**Built-up area:** 3700sq m (approx)  
**Year of completion:** 2012