

50 LUXURY APARTMENTS IN INDIA

VOLOI

White Flag

COVER: Stunning view of the city from 7500 Sft sprawling apartment located in Mumbai.
Architects: KNS Architects Pvt Ltd; Photographer: Sebastian Zachariah.

TITLE PAGE IMAGE: View of the swimming pool located on the top floors of a high-end apartment in Noida.
Architects: M:OFA Studios Pvt Ltd; Photographer: Manish Gulati.





M:OFA Studios

6500 SFT | NOIDA

This stunning duplex apartment in Noida has a décor scheme, where contemporary styling gets redefined. Interwoven into the fluidity in the space, the décor elements merge seamlessly with the furniture and accessories. Amorphous shapes extend from ceilings and flow down walls, spill on to the floor; sometimes ending with a flourish and sometimes extending beyond and continuing into the adjacent space to bind the theme together. Colour and material boards are also chosen to add interest to the décor.



FIRM

M:OFA STUDIOS PVT LTD

PRINCIPAL ARCHITECT

MANISH GULATI

TEAM SIZE

20

CONTACT

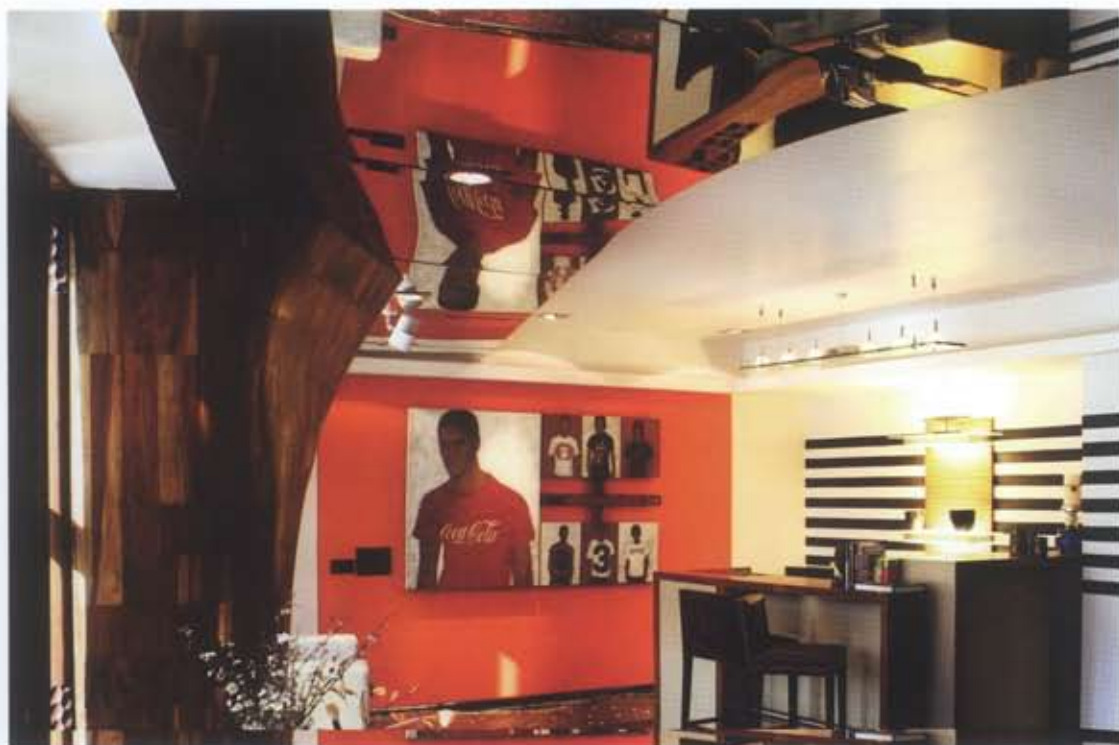
C30/A, LOWER GROUND, KALKAJI
NEW DELHI 110019

+91 11 40513867

mofastudio@gmail.com

www.mofastudio.com







The clients are a business family with three generations living in the house. This factor entails that the home interior must cater to diverse sensibilities. The designer's challenge is to create a unified space that functions as one home and appeals to all members.

A 'celebration of form and colour' is the first response the mind generates when one steps into this huge apartment. There is a sense of curiosity and excitement as one tries to assimilate the sensory experience of the space and wonders what is going to come next. And what comes next seems like the most natural step forward; in the same direction, maintaining the essence of the previous space and yet having its own character and distinctive identity.

Located on the top floors of a high-end apartment block equipped with a car-lift, the lavish duplex also has a swimming pool in the attached balcony. A bar, lounge and dance floor are other highlights of the plan, perhaps included to cater to the needs of the younger generation.





Stylistically the décor is on contemporary lines. However the quirky abstract forms and the aesthetic treatment to the overall décor lend an organic feel. The nonlinearity and nonconformity of the space starts from the main door and flows in and out of all the rooms. The overall look of the décor has a boldness of form and vibrancy of colour. The linearity of space is broken using quirky fluid elements. Never compromising the functionality or unduly wasting space, floating walls and amorphous forms flow over the floor, walls and ceiling. All the variables inherent to interior design work together here, to create a unique home interior.

Lines are stopped on plan where the designer decided to stop them; and not where they were supposed to stop. A separate construction technique had to be employed to enable this continuity. Hence multiple sections of the nonlinear walls were derived, assembled on site as fins and then covered on top with POP and wire mesh.







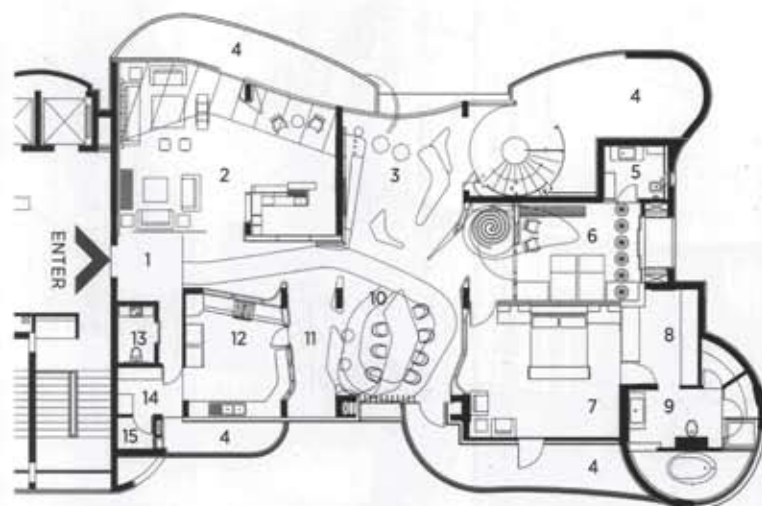
Walking through this house is a unique experience. The transition between spaces is smooth and seamless. The continuity is never compromised, yet each individual space has a distinctive character. The fluidity of the interior elements helps maintain the continuity and thereby makes the home look unified, rather than disjunctive. When one walks out of the house it is difficult to isolate and recall which space you liked the most as the whole house reads like one complete experience.



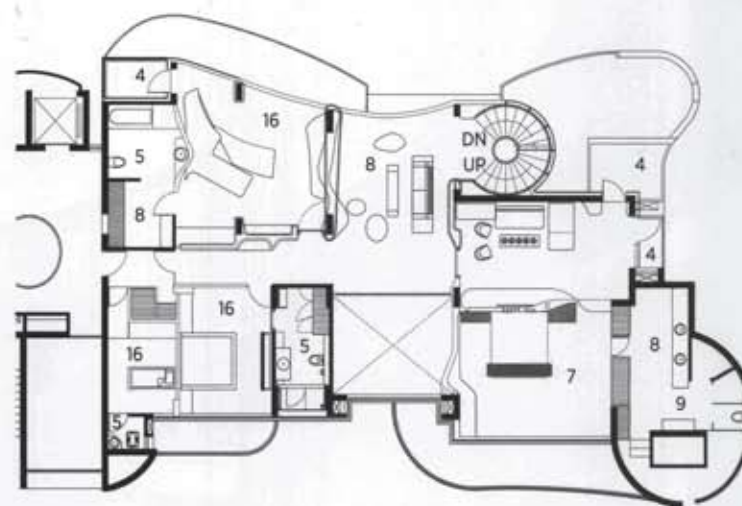
Colourspeak Presented by Asian Paints Royale:

Colours can pep up the duller of spaces or create a meditative mood in the most bustling ones. Quirky twists can be added to the décor by adding a tangy green to an ochre-walnut scheme; or a free-flowing red in a sedate white space.

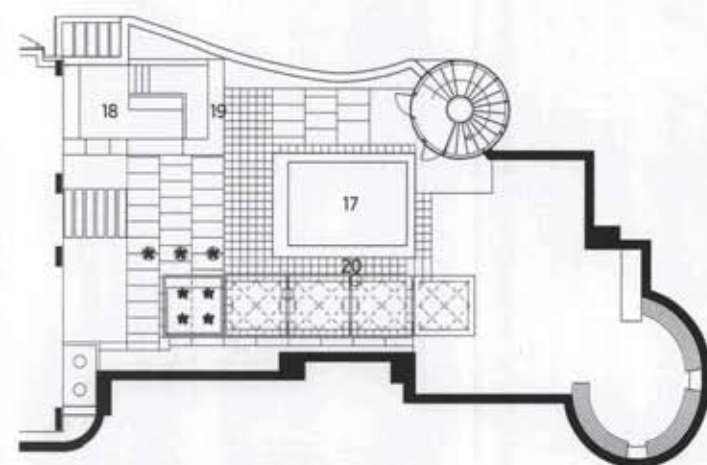




LOWER LEVEL PLAN



MIDDLE LEVEL PLAN



UPPER LEVEL PLAN

FURNITURE LAYOUT

- | | |
|-----------------------|-----------------------|
| 1. VESTIBULE | 11. BREAKFAST COUNTER |
| 2. FORMAL LIVING ROOM | 12. KITCHEN |
| 3. FAMILY LOUNGE | 13. POWDER ROOM |
| 4. TERRACE | 14. UTILITY DRY AREA |
| 5. TOILET | 15. UTILITY WET AREA |
| 6. STUDY / DEN | 16. BEDROOM |
| 7. MASTER BEDROOM | 17. POOL |
| 8. WALK-IN-WARDROBE | 18. SERVICE AREA |
| 9. MASTER BATHROOM | 19. BAR |
| 10. DINING | 20. LOUNGE |

PRODUCTS / VENDORS

PAINT **ASIAN PAINTS** | SANITARY WARE **KOHLER** | FURNITURE **CUSTOM MADE** | FURNISHINGS **HANDS** | FLOORING **ODYSSEY, BISAZZA, CENTURY** | KITCHEN **HACKER** | ELECTRICAL **OSRAM, ARTEMIDE, LEGRAND, BLUE STAR** | PAINTINGS & ARTEFACTS **GALLERY 7, INDIA FINE ART, VIYA, AUGUST** | ELEVATORS **GRANDPRIX** | DOORS & WINDOWS **CUSTOM MADE**

CONSULTANTS / CONTRACTORS

STRUCTURAL **ROARK CONSULTING ENGINEERS, DALIP SINGH & SONS** | ELECTRICAL **M P VERMA & ASSOCIATES, DALIP SINGH & SONS** | CIVIL, LANDSCAPE, HVAC, PLUMBING, PMC, FAÇADE, ENGINEERING **MOFA STUDIOS PVT LTD, DALIP SINGH & SONS**