

# home review

FEBRUARY 2010

Rs 75

**BATHROOM  
SPECIAL**

**Unfettered Semantics**  
M/s Prabhakar B Bhagwat & SRDA

**Country Getaway**  
Shabnam Gupta

**PLUS**

Cartoons By VINS

Retail Therapy

By Guise

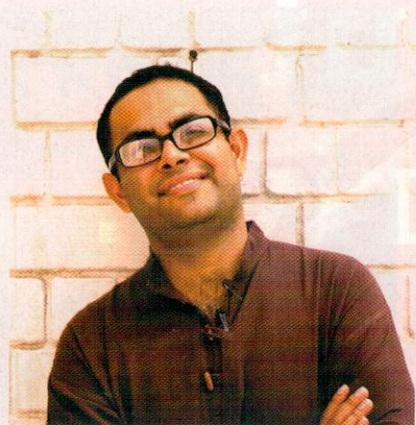
Snapshot Of

Surreal Japan

**UXUA CASA**  
Luxe Rejuvenation

**Fine Line Designers**  
Soul Curry





Name of Architect :

Manish Gulati

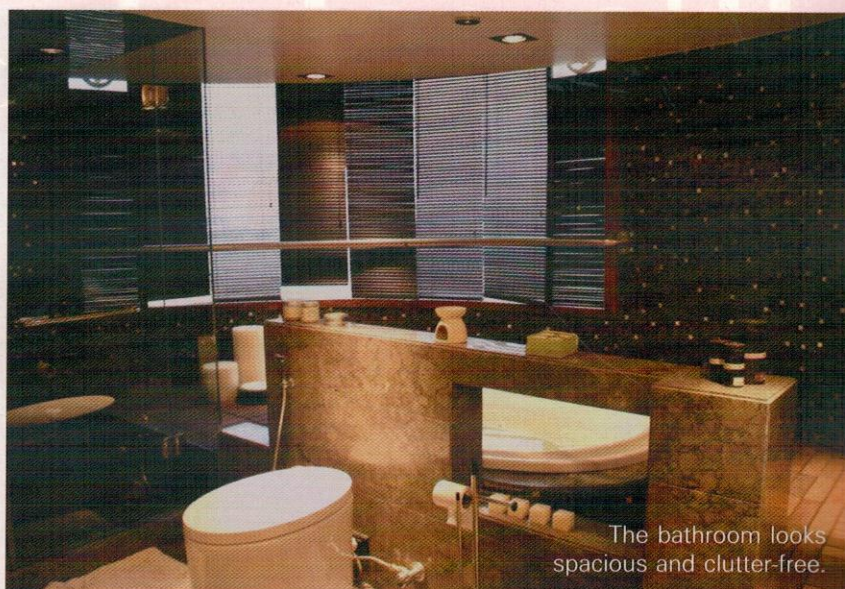
Name of Firm: M:OFA Studios Pvt Ltd

Tel: (011) 40513867

Email: [contact@mofastudio.com](mailto:contact@mofastudio.com)

Web: [www.mofastudio.com](http://www.mofastudio.com)

► Architect Manish Gulati of M:OFA Studio says, "Bathrooms should be treated beyond functional



The bathroom looks spacious and clutter-free.

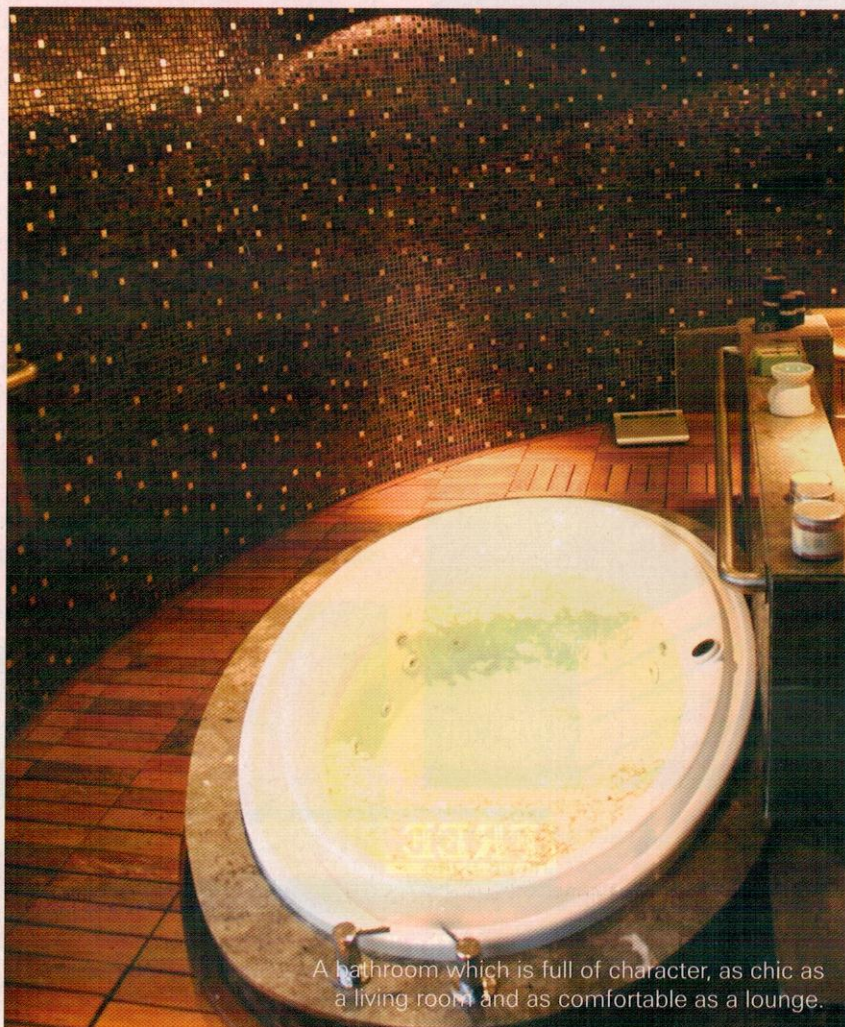
and mundane spaces. This can be done by bringing them closest to the individual personalities of the users as this is one space where one is alone and can connect with

one's being; this area of the house should therefore be given prime importance.

Both the bathrooms featured here have been created to portray a spa-like feel. They are spaces where one can unwind completely and look forward to spending some leisurely time. With 200 square feet of space available for each bathroom, space was not a constraint but, apart from the usual amenities, features like a Jacuzzi, sauna cubicle, a steam cubicle and a shower area had to be included. The challenge lay in yet making the bathroom look spacious and clutter-free. All the functional spaces have been stacked along the wall and the bathtub has been set towards a large window overlooking mustard fields. A Bose home theatre system that can be viewed from the bathtub and a bookshelf next to the WC further add to the recreational purpose of the space.

Manish says, "The idea was to create a luxurious yet very Zen-like space. The intention of the design was to transcend a utilitarian function into a more contemplative space taking it to a level where a mere bathroom is full of character, as chic as a living room and as comfortable as a lounge.

In the first bathroom, the flooring is Australian marble while the walls have been laid with Bisazza white mother of pearl tiles. An init



A bathroom which is full of character, as chic as a living room and as comfortable as a lounge.





The bathtub has been set within a hardwood deck.

white onyx marble countertop houses the washbasins. In the second bathroom, Grey Williams marble has been used on the floor

which is complemented by Bissazza gold and purple mosaic tiles on the wall. In both the bathrooms, the bathtub has been set

within a hardwood deck. The sanitary ware is from Kohler and the fittings are from Gessi. Luxury is well defined in both the bathrooms. ■



An inlaid white onyx marble countertop houses the washbasins.