

# iDECORAMA

magazine.idecorama.com

FEB 2017 ₹200

DESIGN TALES

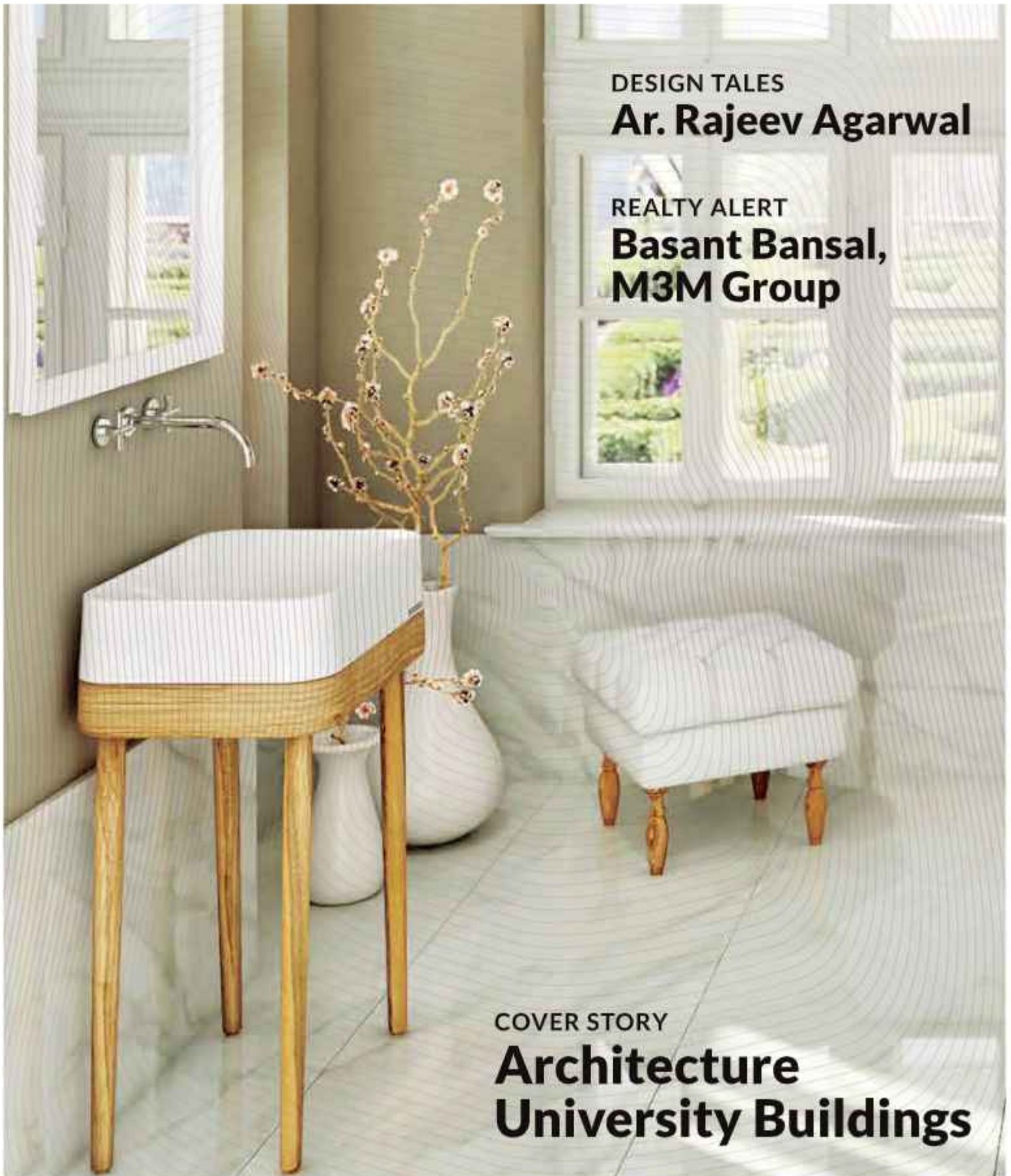
**Ar. Rajeev Agarwal**

REALTY ALERT

**Basant Bansal,  
M3M Group**

COVER STORY

**Architecture  
University Buildings**







The circular window washes the lower level (bar) with as much sunlight required to keep up with the stated chiaroscuro effect



# *an irish retreat*

**Ar. Manish Gulati of Manifestation of Fluid Architecture (M:OFA Studios) creates a warm and contemporary ambience for a New Delhi based Gastro pub whose interiors brings alive the charm of vintage Irish pubs and bars.**

**T**he owner of The Chatter House wanted a fine dining ambience inspired from the vintage pubs in Ireland for his 1,700 sq.ft restaurant located in posh area of Khan Market in New Delhi. Spread over two floors, this restaurant has been designed as an understated extension of its first outlet located in Nehru Place. The lower level of the restaurant features the bar area along with twin circular windows whereas the upper level features the restaurant area along with the oversized square windows continued over as skylights. The interior and architecture of the restaurant has been done by Ar. Manish Gulati,

who has managed to create a décor which represents the vintage elegance of Irish pubs and bars in a contemporary design vocabulary. The overall design of the restaurant influences an ambience which gives one get away from a busy life and also brings the culture of spending time with friends, having fun over foods and drinks in a formal environment yet leaving room for all the freewheeling conversations. Throwing light on the design details of the restaurant, Gulati said, "Through the design, we have tried to maintain the 'formality' of fine dining intact while opening up the space to connect to modes of informality."



The two brick lined barrel vaults resting on heavily riveted steel girders in a balanced symmetry, conjure up multiple images of an old reclaimed British/Irish underground station or a tunnel







Ar. Manish Gulati

“Through the design, we have tried to maintain the ‘formality’ of fine dining intact while opening up the space to connect to modes of informality.”



“The bar on the lower level derives its design interpretation from old Irish pubs and bars dotted across Dublin,”

### Space Details

As one enters the restaurant, the oversized black matte finished steel door, paneled with clear glass, takes one near to a dark stairway guided through a sliver of light which gives a switch over from a bright to a dusky interior thereby giving a feel of the obvious contraction of the vision. Built-in step lights dab a warm luminance along the edge, which makes it appear as a guiding trail. The staircase on the left has pictures of famous vintage rock bands pressed against an austere pale wall whereas the right side is covered in a weathered patina and gradating ochre radiance of brick surface. The white lime intersticed between these tiles energises the spirit of the space and

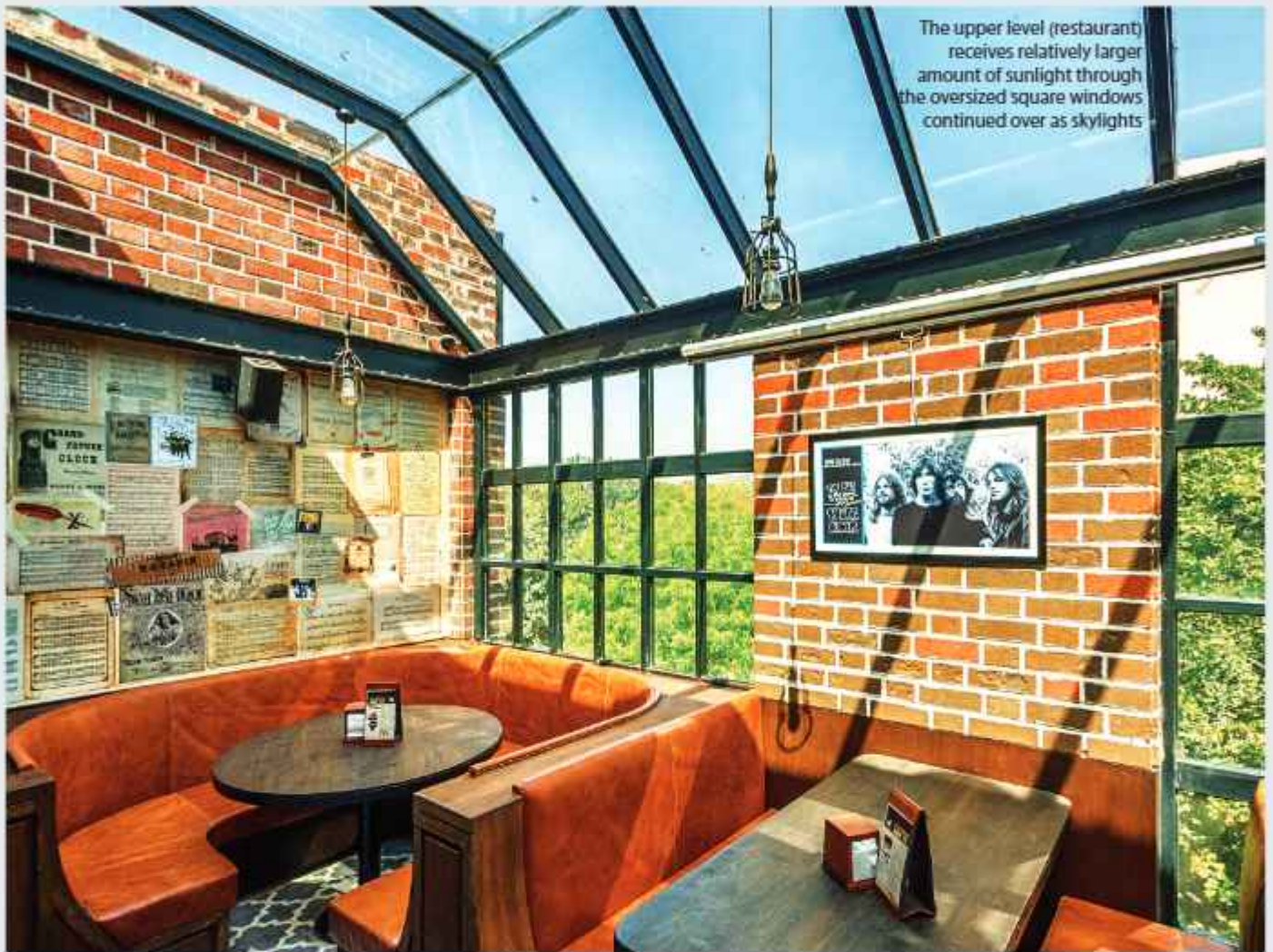
also adds as a boldly beaming backdrop juxtaposed against a dark forefront.

Treading upstairs takes one to the bar level where two brick lined barrel vaults resting on heavily riveted steel girders in a balanced symmetry, conjure up multiple images of an old reclaimed British/ Irish underground station or a tunnel. The brick lined barrel vaulted ceiling and the circular windows were not a part of the original structure. It has been constructed exclusively to iterate the design idea. The bar on the lower level derives its design interpretation from old Irish pubs and bars dotted across Dublin.

The half circular vaults culminate into the oversized full circular glass windows thereby getting rendered by the light that washes and texturizes its











“The brick lined barrel vaulted ceiling and the circular window was not a part of the original structure. It has been constructed exclusively to iterate the design idea”

multiple brick surfaces on them. In the middle of the room sits a majestic art deco inspired Oak wood bar counter and against it is neatly placed well-proportioned square wood and tanned leather bar stools. The gleaming elegance of the counter gets a subtle punch of masculinity through the steel member embedded below the counter top. The pronounced riveting at its corners adds an element of vintage embellishment to it, quintessential yet understated. The seating is designed again with tanned antique leather upholstery with dark wood high back paneling which makes one reminiscent of the Irish bars and pubs in and around Dublin. Flooring is done in grey and white terrazzo tiles which form a continuous hypnotic pattern visually connecting to the richness of an oversized carpet. The space gives an impression of a tunnel lit in the dark through a series of demurely designed lights jutting out along the periphery and others suspended down the ceiling. These are inspired from the wrought iron torches carrying Edison Bulbs used by the Railway tunnel mechanics during the locomotive era of England.

While traversing from lower to the upper floor, one literally feels a yank from the impromptu daydreaming. Light rays squirting through the skylight above the staircase and a striking image of the English rock band 'The WHO', their members sleeping to glory amusingly brings one to retalieste back to consciousness. In a high visceral construct, the space turns into a caffè latte from a dark roast Macchiato. The relatively dusky interior of the lower level gets transpired into a naturally blanched upper floor through the light that pours in from the glazed skylights and two oversized windows. These openings create a vivid interface of the space with the overlooking tree and the sky. The utility spaces (liquor store, pizza kitchen and toilet) are tucked on the rear end of lower level whereas the main kitchen is set on the upper level, adequately lit and ventilated. The eclectic shades of 'brown' carried across the design elements evoke multiple pensive emotions. The lower level with its lingering warmth sets the mood of a private rendezvous whereas the upper level rings with an air of freewheeling laughter and conversations. ■

Text Credit: Zohra Khan, Media Researcher





The bar area features a majestic art deco inspired Oak wood bar counter and against it is neatly placed well-proportioned square wood and tanned leather bar stools

“The lower level of the restaurant features the bar area along with twin circular windows whereas the upper level features the restaurant area along with the oversized square windows continued over as skylights”

#### Project Details:

- **Project Name**  
The Chatter House
- **Location**  
New Delhi
- **Principal Architect**  
Manish Gulati
- **Design Team**  
Jagbir Singh,  
Tanoy Sarma
- **Photo credits**  
Nivedita Gupta