

February 2018 | Vol 5 | Issue 46 | ₹200

# DESIGN detail

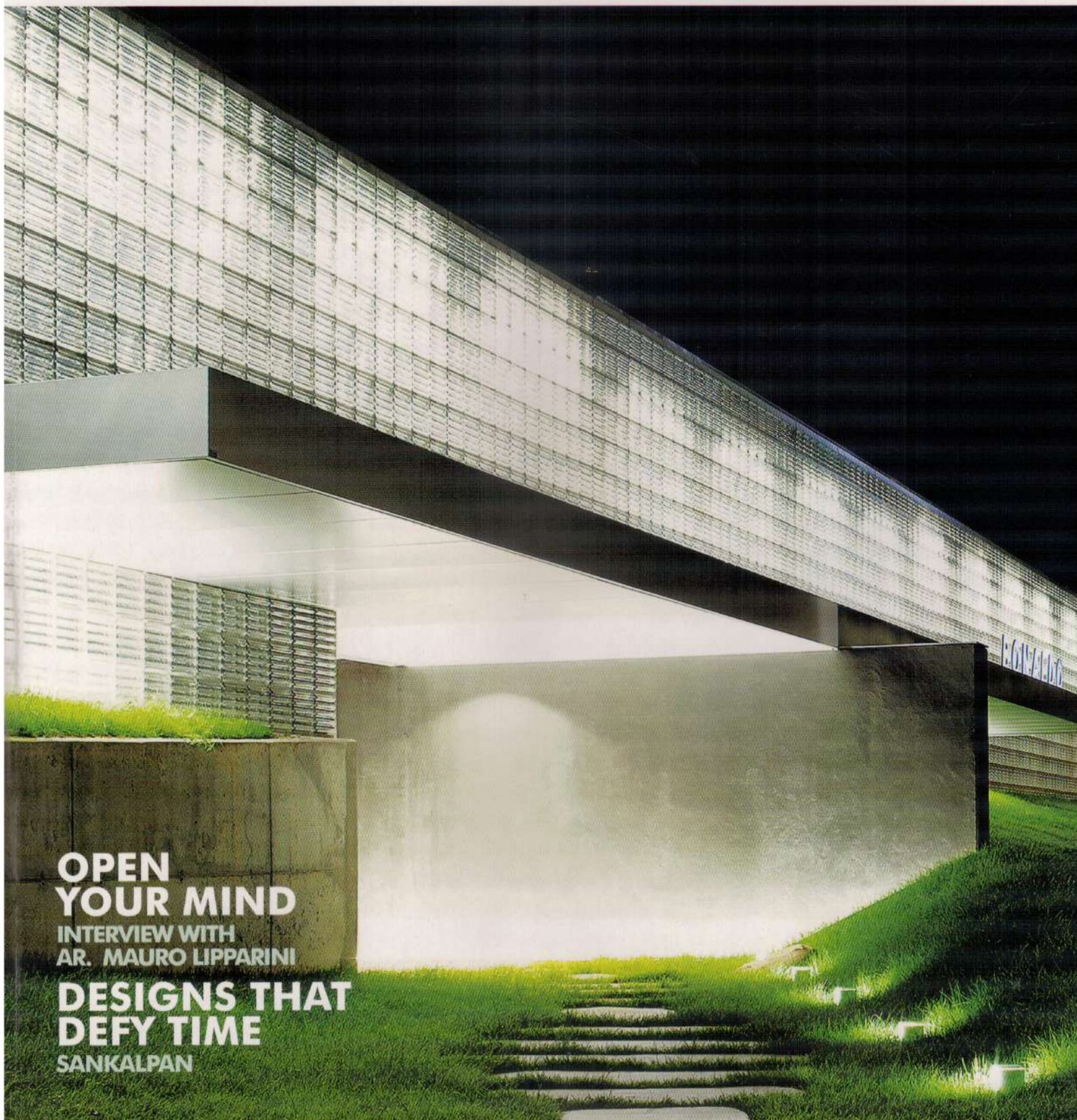
the architecture magazine

**OPEN  
YOUR MIND**

INTERVIEW WITH  
AR. MAURO LIPPARINI

**DESIGNS THAT  
DEFY TIME**

SANKALPAN



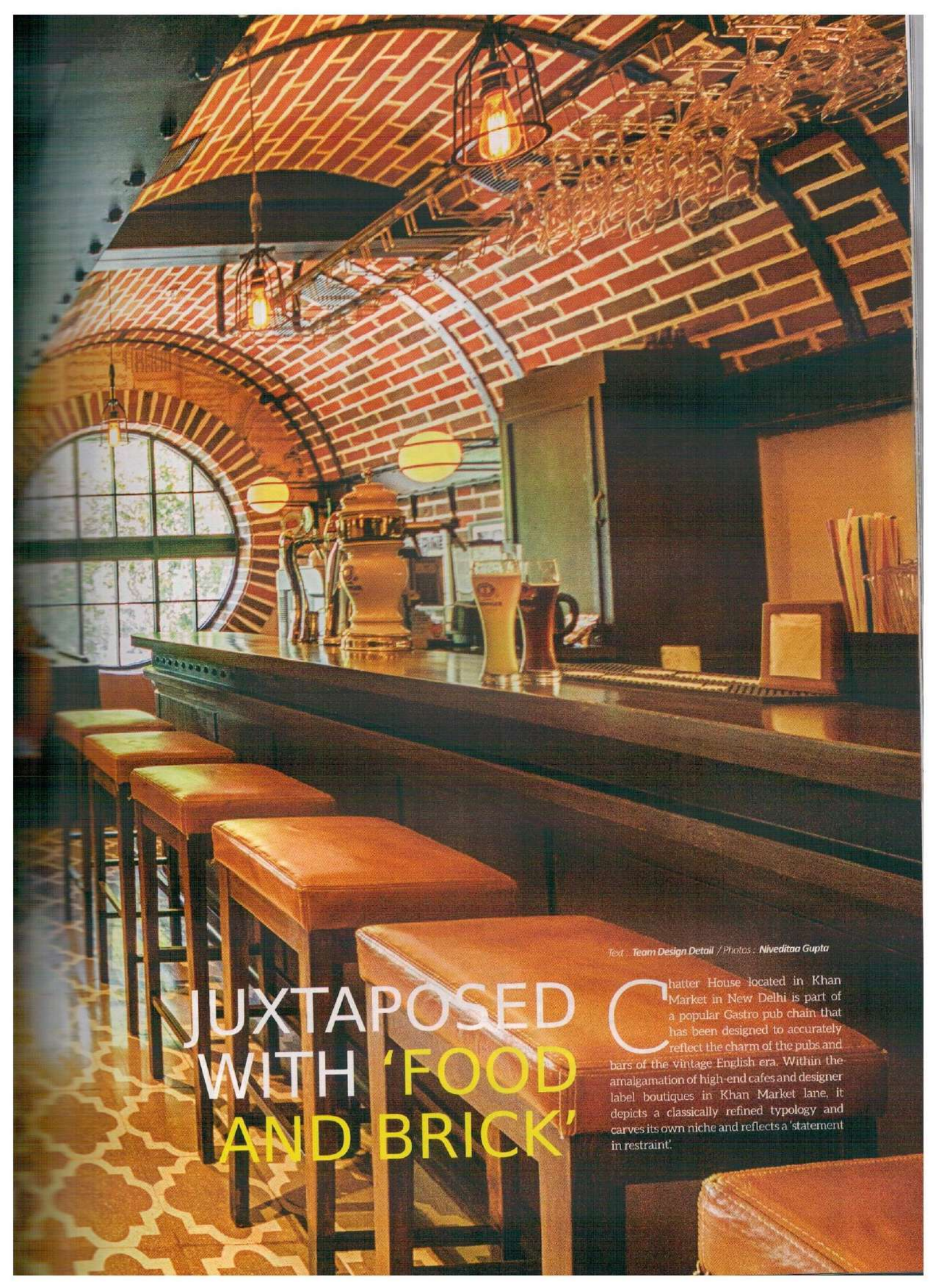


## AESTHETIC GROUNDS

The charm of a vintage pub





The image shows the interior of a pub, Chatter House, featuring a series of brick arches that form the ceiling and walls. A long, dark wooden bar runs across the middle of the frame, with several leather-upholstered bar stools lined up in front of it. On the bar, there are two glasses of beer, one light and one dark, and a large, ornate brass beer dispenser. The floor is covered in a patterned tile. The lighting is warm, with pendant lamps hanging from the ceiling. The overall atmosphere is classic and refined.

# JUXTAPOSED WITH 'FOOD AND BRICK'

Text : Team Design Detail / Photos : Nivedita Gupta

Chatter House located in Khan Market in New Delhi is part of a popular Gastro pub chain that has been designed to accurately reflect the charm of the pubs and bars of the vintage English era. Within the amalgamation of high-end cafes and designer label boutiques in Khan Market lane, it depicts a classically refined typology and carves its own niche and reflects a 'statement in restraint'.





Custom made furniture and lighting

A large steel door with black matt finish and clear glass panel welcomes the customer through a narrow, dark stairway, where a sole sliver of light from built-in step lights guides the way, into the first floor. The walls of the stairway generate the first hint of the dramatic interiors with pictures of famous vintage rock bands on the left and earthy elegance of differing shades of brick and white lime on the right. Once upstairs, the double barrel vaults pointing to the large circular windows catch the eye. Akin to the British and Irish underground stations and tunnels, the insides were made deliberately cosy with the natural shade of bricks and ample supply of natural light.

The majestic bar counter designed from an inspiration from Art Deco is built out of

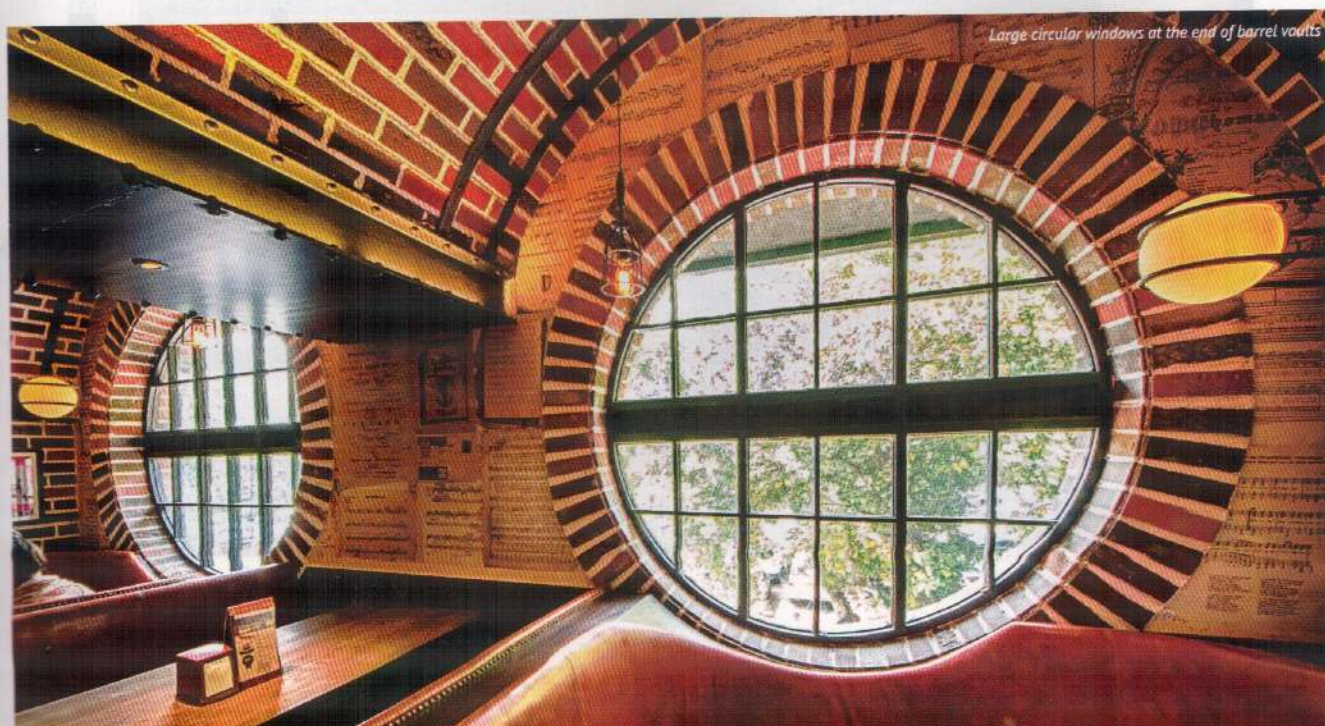
#### FACT FILE

PROJECT	: THE CHATTER HOUSE
LOCATION	: NEW DELHI
BUILDING TYPE	: RESIDENCE AND OFFICE
CLIENT	: THE CHATTER HOUSE
DESIGN PRACTICE	: M.OFA STUDIO
PRINCIPAL ARCHITECT	: MANISH GULATI
DESIGN TEAM	: MANISH GULATI, JAGBIR SINGH, TONOV SARMA
SITE AREA	: 1000 sq.ft
BUILT-UP AREA	: 1700 sq.ft
PROJECT MANAGEMENT CONSULTANCY	: JADE CONSULTANTS
CONTRACTORS	: LIMRA (ELECTRICAL, CIVIL AND INTERIORS) ARROW REFRIGERATION (HVAC)
YEAR	: 2016



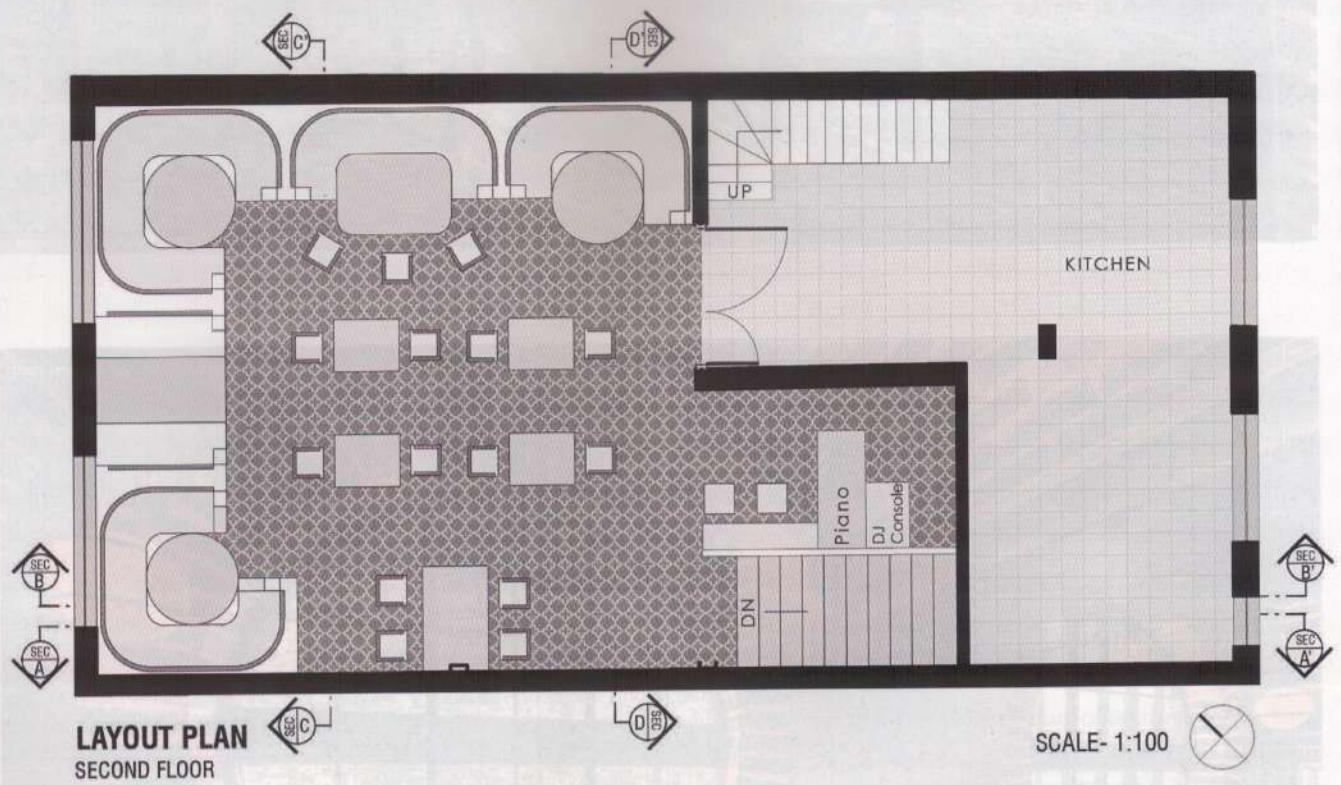
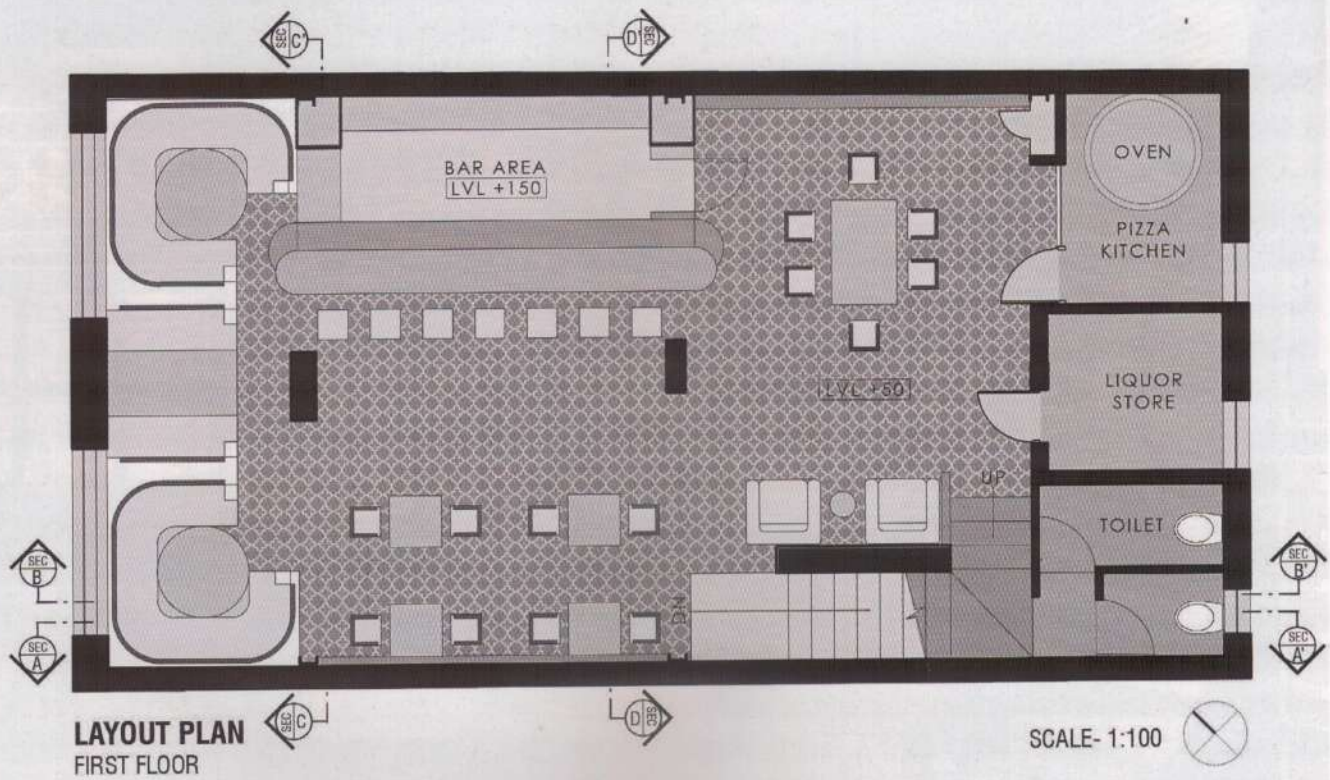


Majestic bar counter inspired from Art Deco

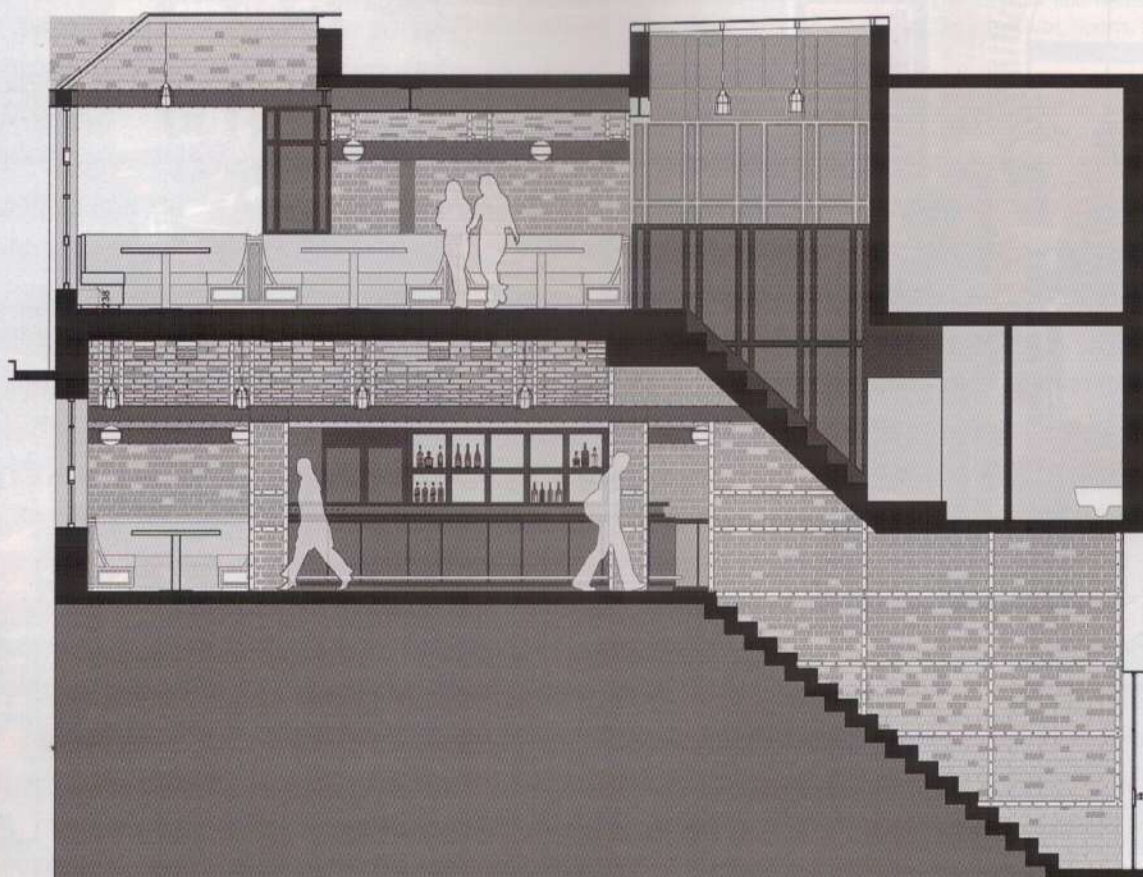
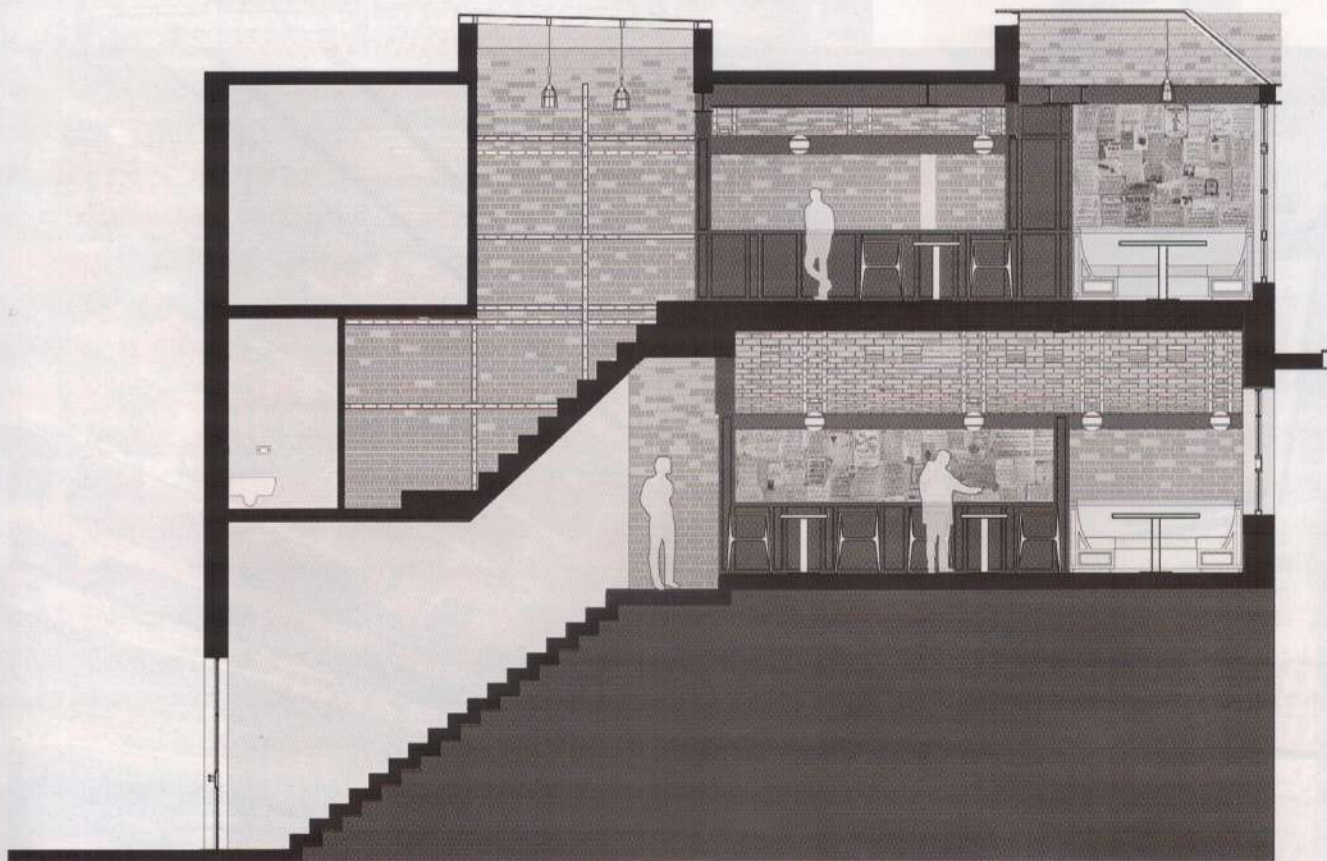


Large circular windows at the end of barrel vaults









# SECTIONS

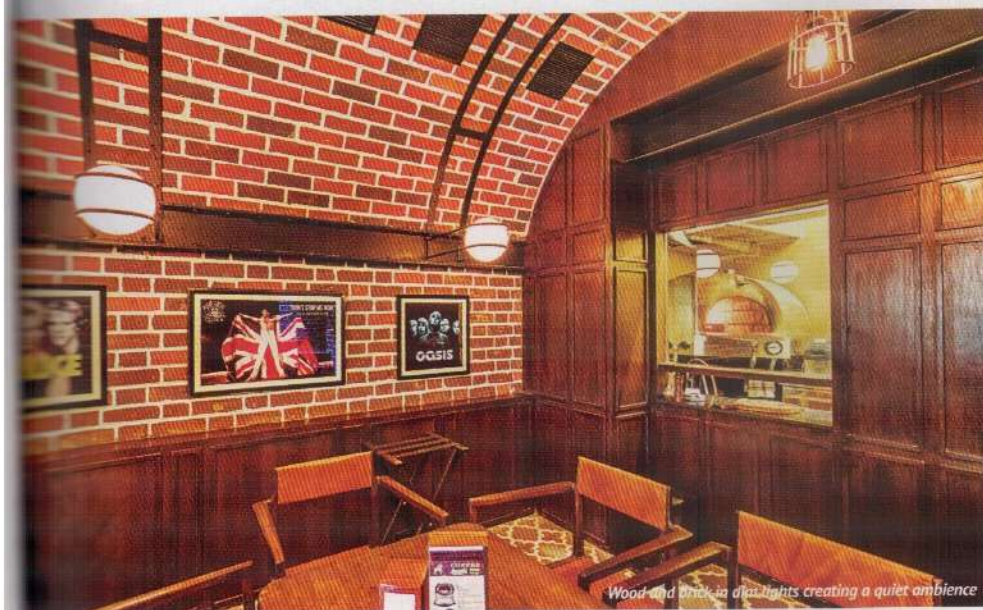




*Terrazzo tile pattern adds more interest to the setting*

SECTION





## M:OFA

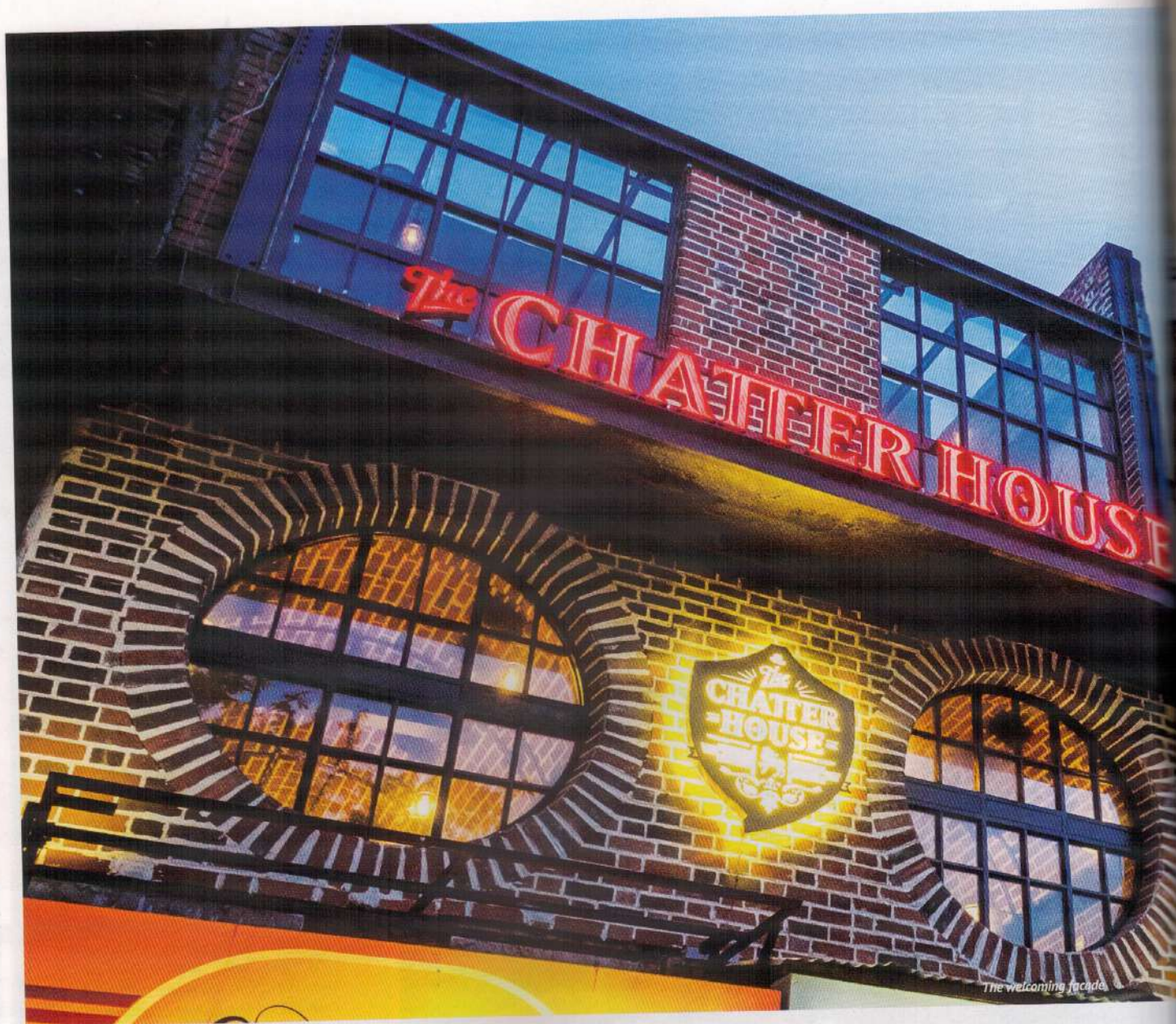


M:OFA stands for 'Manifestation Of Fluid Architecture.' A national and international award-winning firm, 'M:OFA Studios' was found in 2007 by Manish Gulati and Tanushree Gulati. Previously known as Studio GSA (2002-2006), the studio established itself with a team of highly trained and determined architects and planners with a global vision in Architecture, Design, Urban Planning and Urban Design. As a design practise, they believe in creating efficient and optimised designs which follow a right balance between intuition and logic. The impressive portfolio spans across Institutional (Schools and College campus), Public Spaces, Commercial (Offices, Restaurant, Retail), Residential and Recreational (Spas, Resorts, Clubs, Sports, Salons) both in Government as well as private sector. The Urbanspaces in New Delhi, Toni & Guy Salon at Gurugram and Aearth Resort in Himachal Pradesh are commendable creations by the team.

wood, complete with proportionally and stylistically matched wood-and-tanned leather bar stools, square in shape. All seats are featured with antique styled leather upholstery, tanned tint and high black panelling made in dark wood, akin to the typology of Irish bars and pubs of Dublin. Inspired from old wrought iron torches which once carried Edison bulbs and used by the Railway tunnel mechanics, the distinguished lighting fixtures are placed along the periphery and suspended from the ceiling. The flooring done in grey and white terrazzo tiles with a continuous kaleidoscopic pattern is in visual resonance with the entire ambience.

The sitting room extends to a second floor. Light rays beaming down through the skylight above the staircase and the image of a famous English rock band 'The WHO', where the members of the band are sleeping,





The welcoming facade



Custom made fixed seats on upper floor

bring a sense of resilience in the upper level. The ideology behind the clear demarcation between the lower and the upper floors is to ensure that the outlet itself possesses a spatiality that suggests an available variation for the entire clientele. While the lower level exudes a relatively higher sense of quiet and privacy adhering to a serious or quiet clientele, the upper floor radiates a relatively more cheerful and dynamic vibe promoting freewheeling conversations.

The entire aura of the space reflects the ideology of the gastro pub - faithful to all details that are derived from England and Ireland, holding its quintessential charm. The earthy textures of wood and especially brick, the defining of space by the barrel vaults, and the large typical fenestrations contribute greatly towards making the design idyllic within its context and inclusive to its clientele.